

# 500 MOUNT SERIES

## Features

- Fail-safe when used with snubbing washer
- Axial to radial stiffness of 1:1
- Low natural frequency
- Sturdy, reliable construction

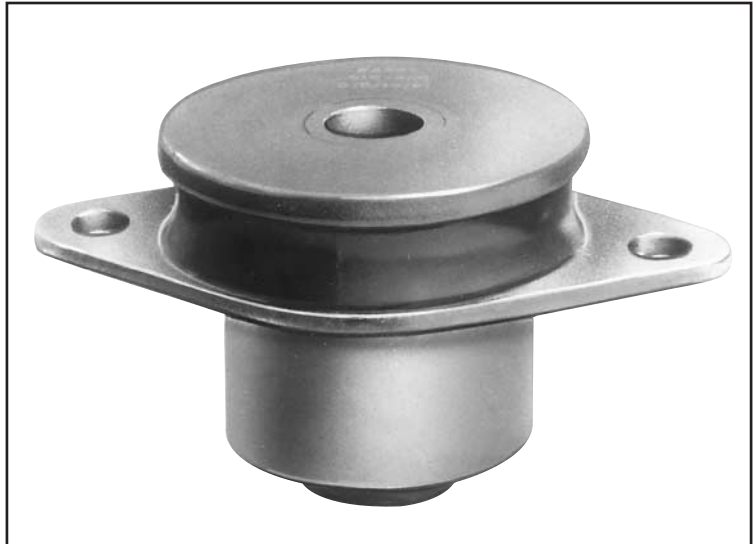
## Benefits

- Economical
- Bonded construction provides constant performance characteristics
- Overlapping load ranges

## Load Range

- 7 sizes with 31 load ratings to 1,780 lbs. per isolator

Low-profile, high capacity mounts for vibration and shock protection.



500 Series mounts are low cost isolators that provide high load carrying capacity, compact size and stability. These all attitude mounts are perfect for isolating truck, bus and marine engines.

## Applications

- Truck, bus and marine engines
- Generators
- HVAC equipment
- Electronic equipment
- Truck cabs
- Machinery, pumps & compressors

**Caution: Not suitable for skid steer loaders.**

NATURAL FREQUENCY	8-18 Hertz
TRANSMISSIBILITY AT RESONANCE	8:1
RESILIENT ELEMENT	Neoprene
STANDARD MATERIALS	Sintered metal and cold-rolled steel
WEIGHT	See dimensional drawings

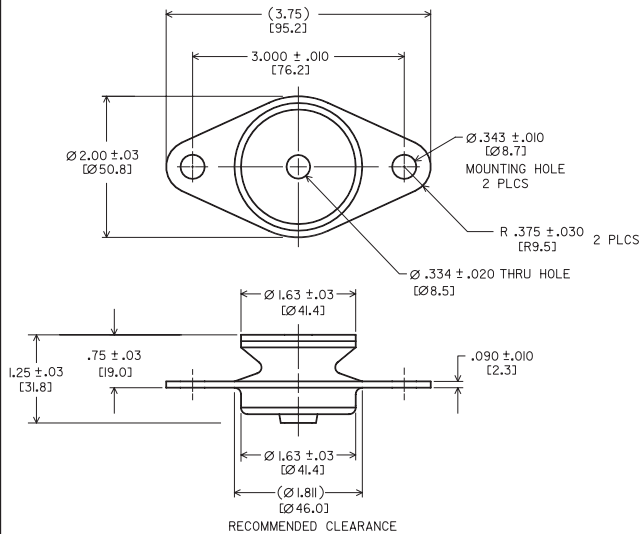
## Environmental Data

- Neoprene elastomer has an operating temperature range of -20°F to +180°F (-30°C to +82°C) and is resistant to oils, most solvents and ozone.
- Special elastomers and finishes are available for applications in severe environments. Please note that Silicone elastomer is not compatible with nickel plating.

# 500 Mount Series (505/506)

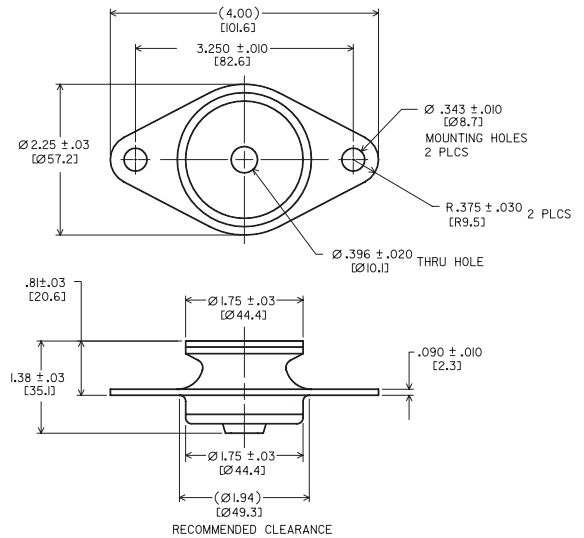
## Dimensions & Performance Characteristics

**SERIES 505 (.25 lbs.) - NOT FOR RADIAL LOADING**



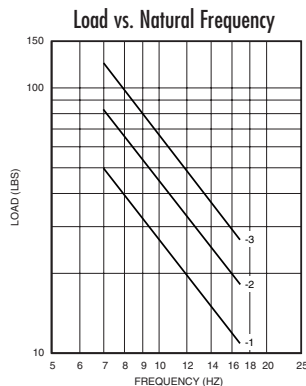
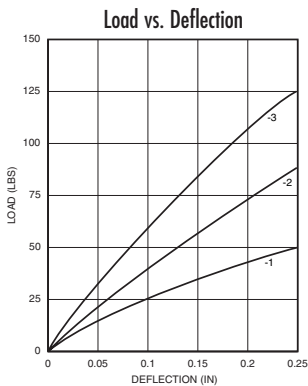
AXIAL STATIC LOAD RANGE - 505 (LBS.)				COLOR CODE
Code	Min.	Nominal	Max.	
-1	12.5	25	38	Red & White
-2	20	40	60	Blue & White
-3	30	60	90	Yellow & White

**SERIES 506 ( 5 oz.) - NOT FOR RADIAL LOADING**

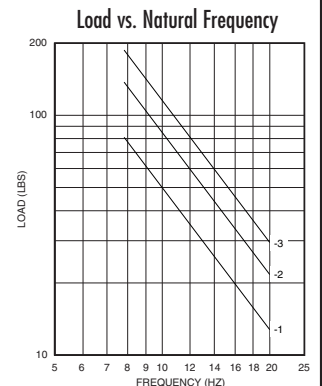
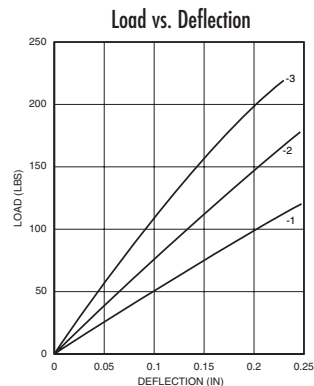


AXIAL STATIC LOAD RANGE - 506 (LBS.)				COLOR CODE
Code	Min.	Nominal	Max.	
-1	25	50	75	Red & White
-2	35	70	105	Blue & White
-3	50	100	150	Yellow & White

**505 Series Performance Data**



**506 Series Performance Data**



Barry Controls  
40 Guest Street • Brighton, MA 02135-9105 • (617) 787-1555 • Fax (617) 787-7807

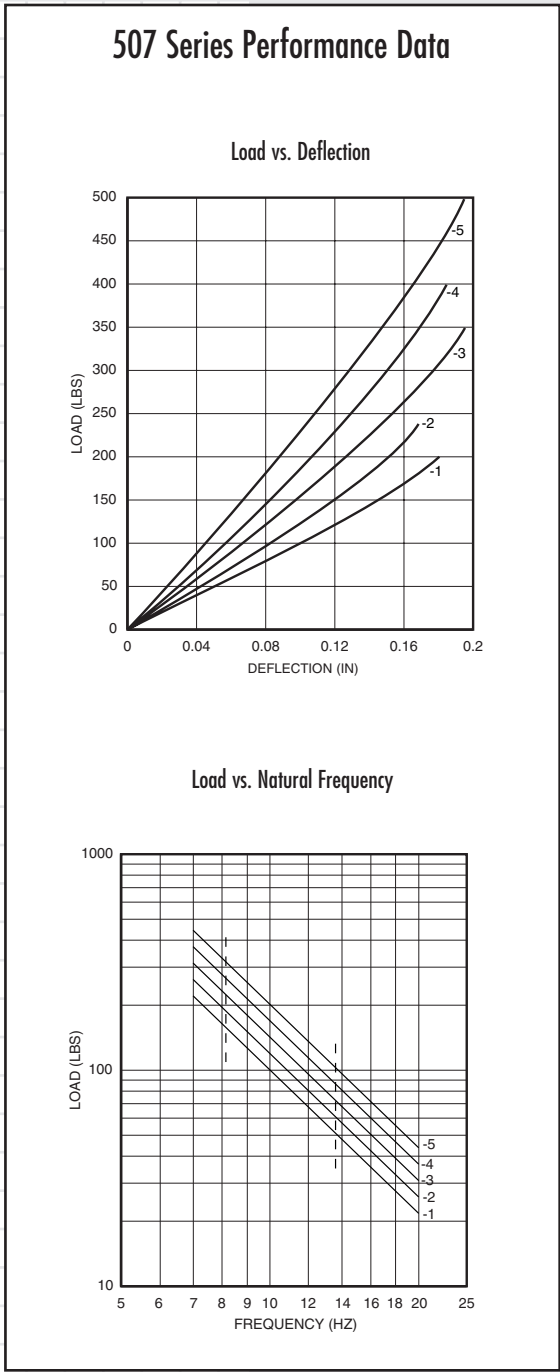
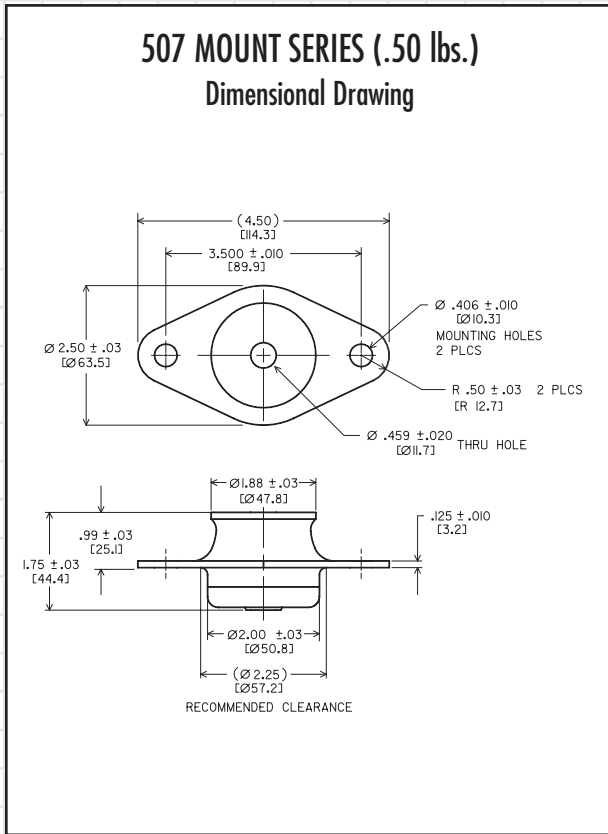
Dimensions and data are subject to change without notice.

For technical, design, or application assistance, call toll free:

1-800-BARRY MA

# 500 Mount Series (507)

## Dimensions & Performance Characteristics



Code*	507 SERIES LOAD RANGE (lbs.)				COLOR CODE
	Axial Static Load Range		Radial Static Load Range		
	Nominal	Max.	Nominal	Max.	
-1	100	150	50	100	Red & White
-2	120	180	60	120	Orange
-3	150	225	75	150	Yellow
-4	180	270	90	180	Green
-5	220	330	110	220	Blue

\* All available in white.



Barry Controls  
 40 Guest Street • Brighton, MA 02135-9105 • (617) 787-1555 • Fax (617) 787-7807

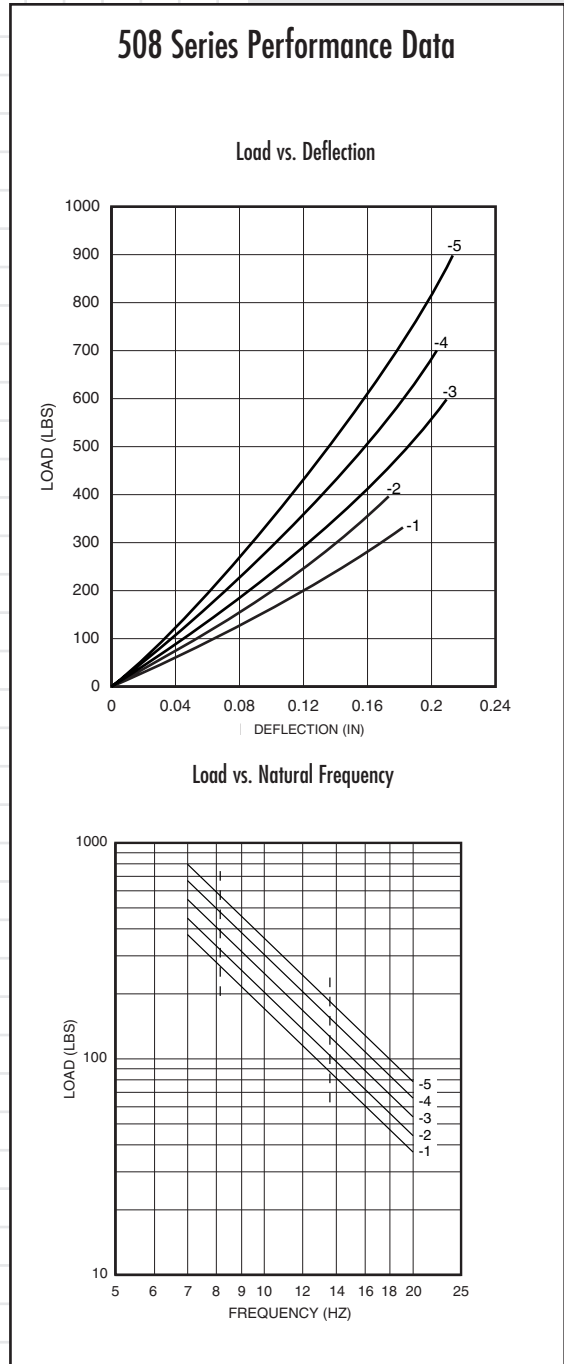
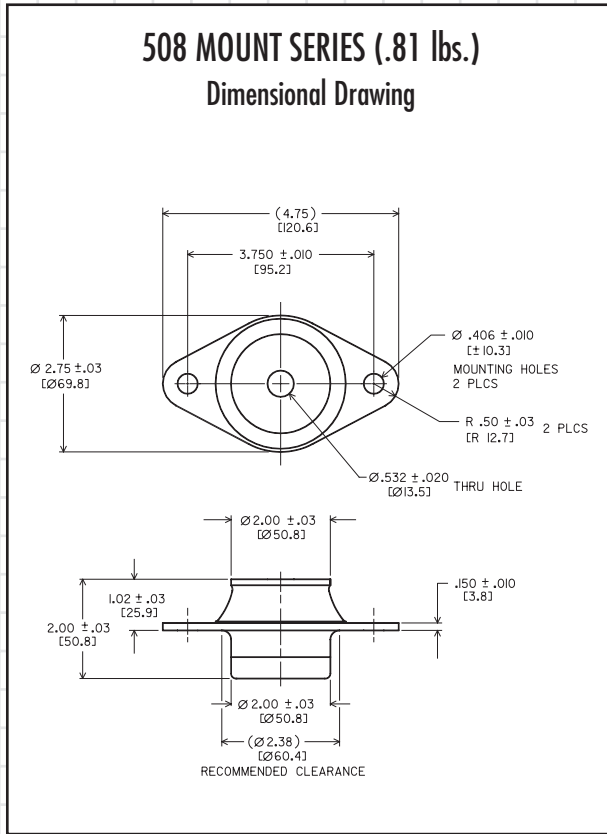
Dimensions and data are subject to change without notice.

For technical, design, or application assistance, call toll free:

1-800-BARRY MA

# 500 Mount Series (508)

## Dimensions & Performance Characteristics



Code*	508 SERIES LOAD RANGE (lbs.)				COLOR CODE
	Axial Static Load Range		Radial Static Load Range		
	Nominal	Max.	Nominal	Max.	
-1	180	270	90	180	Red
-2	220	330	110	220	Orange
-3	260	390	130	260	Yellow
-4	320	480	160	320	Green
-5	380	570	190	380	Blue

\*All available in white.



Barry Controls  
 40 Guest Street • Brighton, MA 02135-9105 • (617) 787-1555 • Fax (617) 787-7807

Dimensions and data are subject to change without notice.

For technical, design, or application assistance, call toll free:

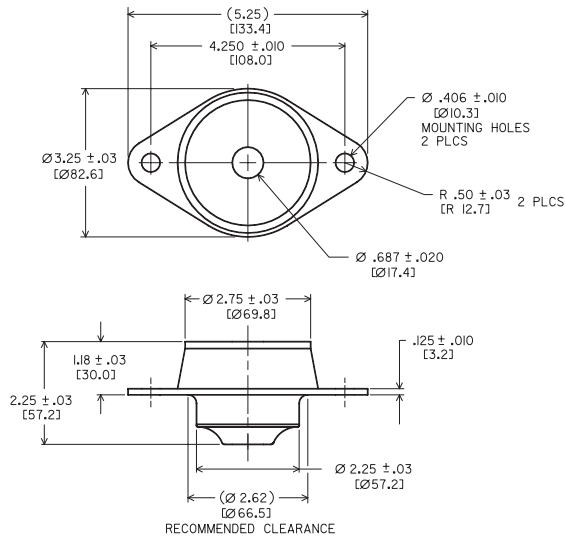
1-800-BARRY MA

# 500 Mount Series (510)

## Dimensions & Performance Characteristics

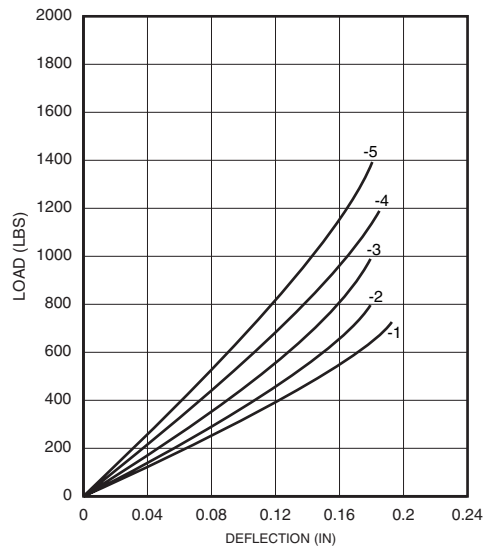
### 510 MOUNT SERIES (1.19 lbs.)

#### Dimensional Drawing

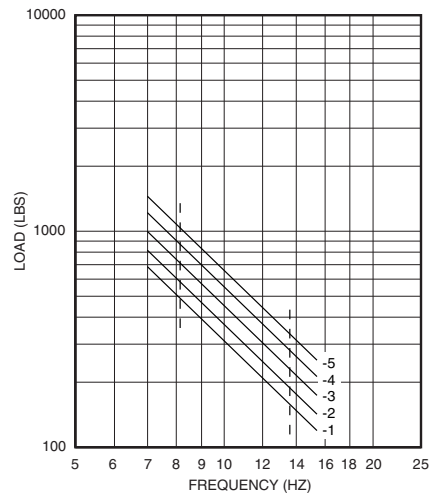


### 510 Series Performance Data

#### Load vs. Deflection



#### Load vs. Natural Frequency



Code*	510 SERIES LOAD RANGE (lbs.)				COLOR CODE
	Axial Static Load Range		Radial Static Load Range		
	Nominal	Max.	Nominal	Max.	
-1	320	480	150	320	Orange
-2	380	570	190	380	Yellow
-3	460	690	230	460	Green
-4	560	840	280	560	Blue
-5	680	1020	340	680	Brown

\*All available in white.



Barry Controls  
40 Guest Street • Brighton, MA 02135-9105 • (617) 787-1555 • Fax (617) 787-7807

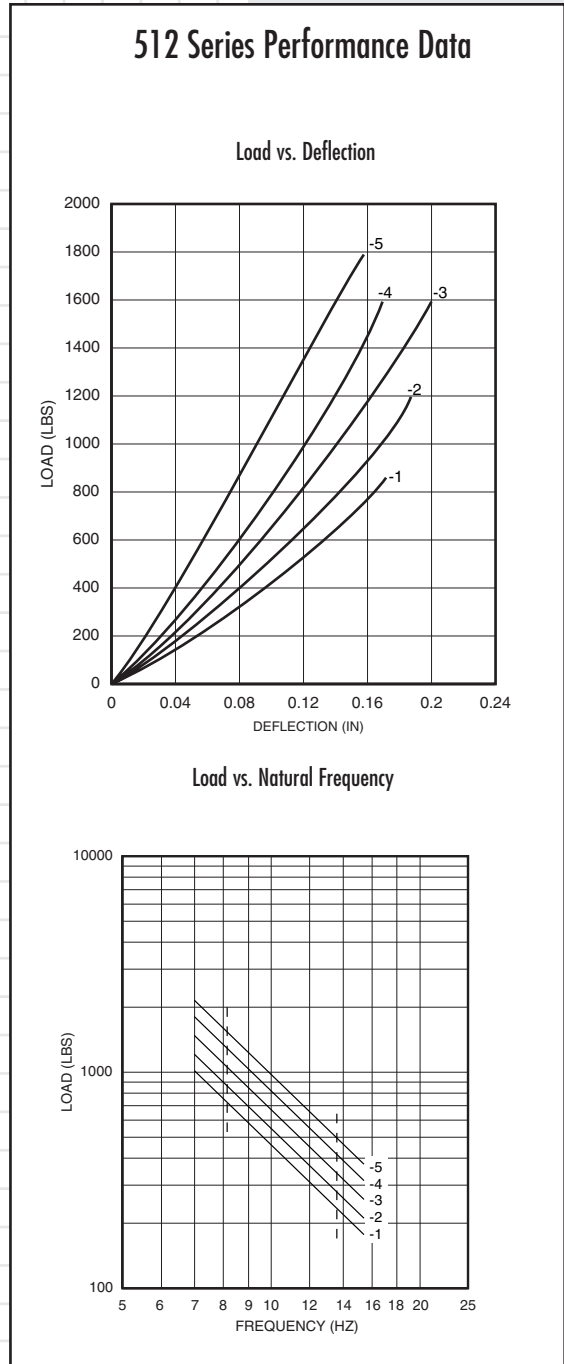
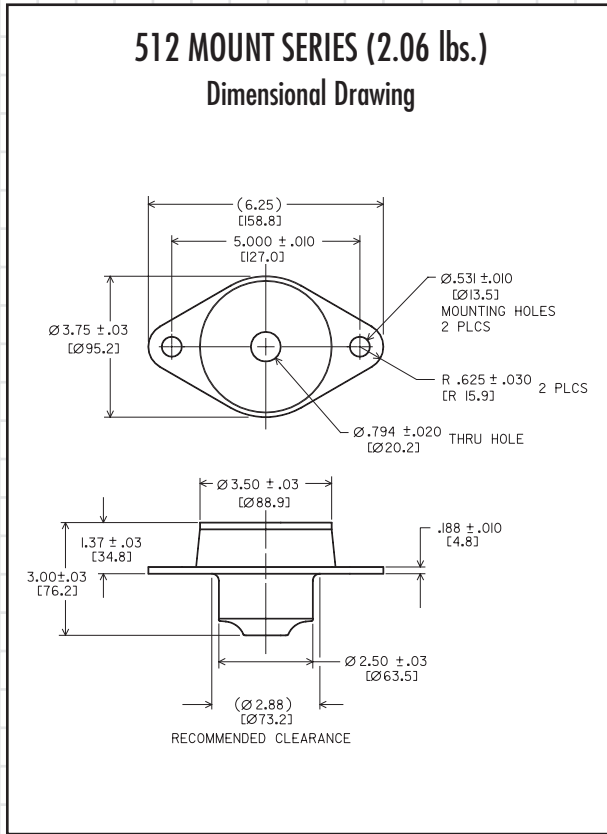
Dimensions and data are subject to change without notice.

For technical, design, or application assistance, call toll free:

1-800-BARRY MA

# 500 Mount Series (512)

## Dimensions & Performance Characteristics



512 SERIES LOAD RANGE (lbs.)					COLOR CODE
Code*	Axial Static Load Range		Radial Static Load Range		
	Nominal	Max.	Nominal	Max.	
-1	460	690	230	450	Red
-2	560	840	280	560	Orange
-3	680	1020	340	680	Yellow
-4	830	1245	415	830	Green
-5	1000	1500	500	1000	Blue

\*All available in white.



Barry Controls  
 40 Guest Street • Brighton, MA 02135-9105 • (617) 787-1555 • Fax (617) 787-7807

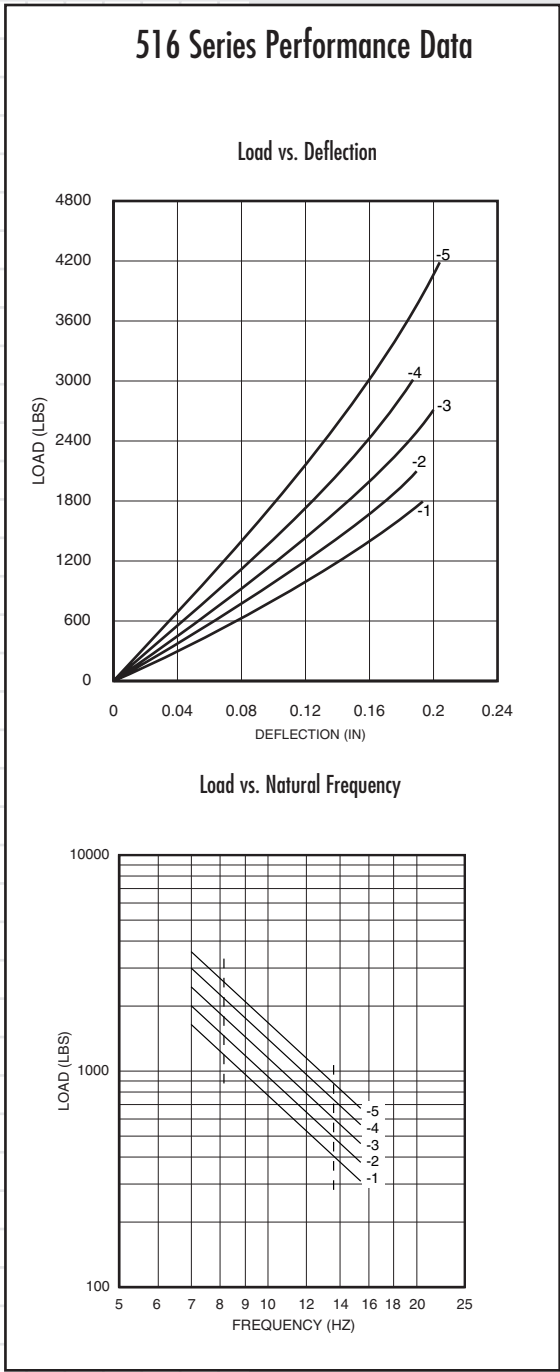
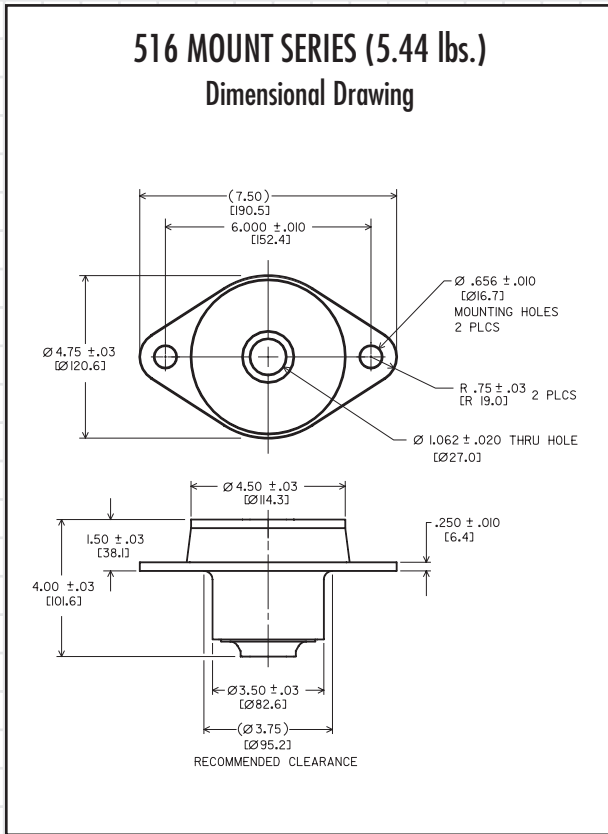
Dimensions and data are subject to change without notice.

For technical, design, or application assistance, call toll free:

1-800-BARRY MA

# 500 Mount Series (516)

## Dimensions & Performance Characteristics



Code*	516 SERIES LOAD RANGE (lbs.)				COLOR CODE
	Axial Static Load Range		Radial Static Load Range		
	Nominal	Max.	Nominal	Max.	
-1	830	1245	415	830	Red
-2	1000	1500	500	1000	Orange
-3	1210	1815	605	1210	Yellow
-4	1470	2205	735	1470	Green
-5	1780	2700	890	1780	Blue

\*All available in white.



Barry Controls  
 40 Guest Street • Brighton, MA 02135-9105 • (617) 787-1555 • Fax (617) 787-7807

Dimensions and data are subject to change without notice.

For technical, design, or application assistance, call toll free:

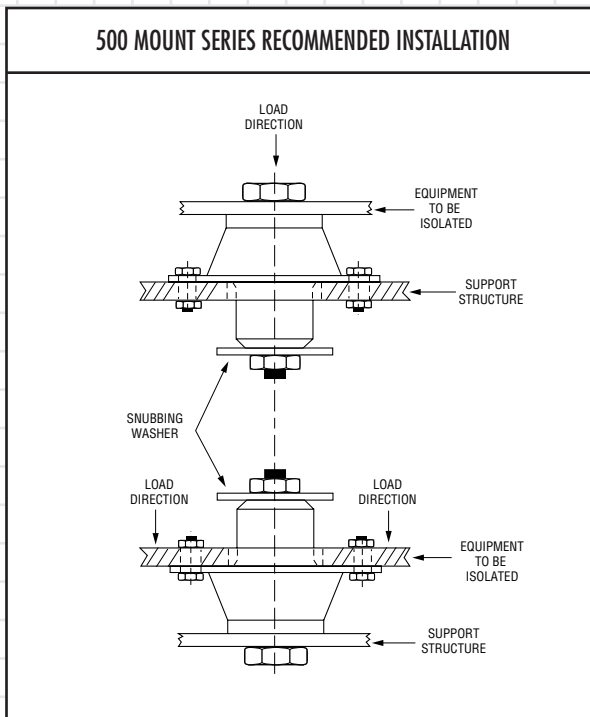
1-800-BARRY MA

# 500 Mount Series

## Technical Data

500 SERIES MAXIMUM TIGHTENING TORQUES			
Part #	Bolt Diameter	Torque (dry)	Torque (lubricated or plated)
505	.313	25*	20*
506	.375	45*	35*
507	.433	80*	60*
508	.500	120*	90*
510	.625	240*	180*
512	.750	380	280
516	1.000	365	275

\* = GRADE 8 BOLT TORQUE



**HOW TO ORDER 500 SERIES ISOLATORS**

500 - 1 - N - S

Basic model # →

Code for load rating →

"N" = Neoprene  
 "R" = Natural Rubber  
 "B" = Butyl  
 "S" = Silicone  
 "L" = Barry LT

"S" = Standard resistant varnish  
 "P" = Black enamel paint  
 "E" = Electroless nickel

Standard suffix is "NS". Consult factory for availability and compatibility of other materials & finishes.



Barry Controls  
 40 Guest Street • Brighton, MA 02135-9105 • (617) 787-1555 • Fax (617) 787-7807

Dimensions and data are subject to change without notice.

For technical, design, or application assistance, call toll free:

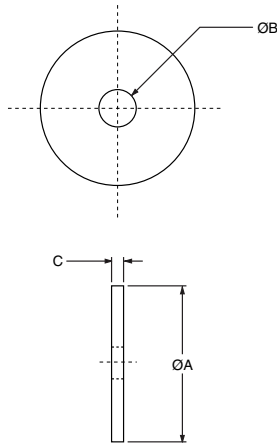
1-800-BARRY MA



# 500 Mount Series (Snubbing Washer)

## Dimensions

### 500 MOUNT SERIES SNUBBING WASHER



The use of snubbing washers is recommended to ensure proper static and dynamic loading of the isolator and retention of suspended equipment under severe shock environments.

Snubbing washers are ordered by separate part numbers as shown in the table below. The standard material is low-carbon steel and the standard finish is zinc plate. Other materials and finishes are available upon request.

Please consult with Barry Controls Applications Engineering at 1-800-Barry-MA for more information on the use of snubbing washers.

Size	"A" Dia.	"B" Dia.	"C"	Part #
505	1.63	.322	.093	R18733-6
506	1.75	.385	.093	R18733-7
507	2.00	.450	.125	R18733-1
508	2.00	.510	.125	R18733-2
510	2.25	.635	.150	R18733-3
512	2.50	.780	.188	R18733-4
516	3.25	1.010	.250	R18733-5



Barry Controls  
40 Guest Street • Brighton, MA 02135-9105 • (617) 787-1555 • Fax (617) 787-7807