

# 500SL MOUNT SERIES

## Features

- Fail-safe when used with snubbing washer
- Axial to radial stiffness of 1:2.5
- Low natural frequency
- Sturdy, reliable construction

## Benefits

- Economical
- Bonded construction provides constant performance characteristics
- Overlapping load ranges

## Load Range

- 558SL = 2 load ratings to 250 lbs. per mount
- 562SL = 2 load ratings to 520 lbs. per mount
- 566SL = 2 load ratings to 1,800 lbs. per mount

Rugged, versatile isolator utilizes elastomer-in-shear for low frequency vibration and in compression for impact shock.



Barry 500SL Series mounts are best suited for applications that require a low vertical natural frequency in conjunction with impact shock protection and superior structure borne noise attenuation.

## Applications

- Truck, bus and marine engines
- Generators
- HVAC equipment
- Farm and construction equipment
- Truck cabs
- Machinery, pumps & compressors

NATURAL FREQUENCY	7-10 Hertz
TRANSMISSIBILITY AT RESONANCE	8:1
RESILIENT ELEMENT	Neoprene
STANDARD MATERIALS	Cold-rolled steel
WEIGHT	See dimensional drawings

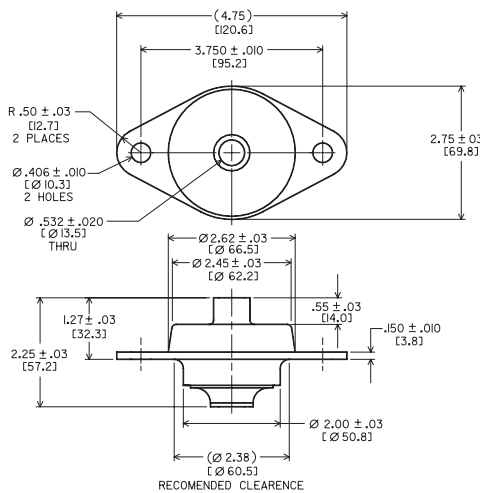
## Environmental Data

- Neoprene elastomer has an operating temperature range of -20°F to +180°F (-30°C to +82°C) and is resistant to oils, most solvents and ozone.
- Special elastomers and finishes are available for applications in severe environments. Please note that silicone elastomer is not compatible with nickel plating.

# 500SL Mount Series (558SL/562SL)

## Dimensions & Performance Characteristics

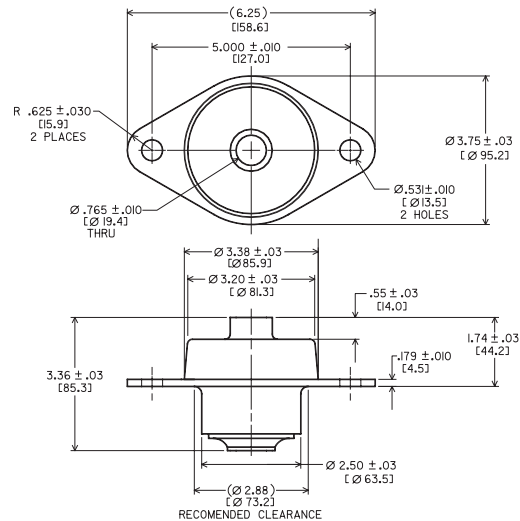
SERIES 558SL Dimensional Drawing (11 oz.)



AXIAL STATIC LOAD RANGE - 558SL

Code	Minimum	Maximum
-1	50 lbs.	110 lbs.
-2	90 lbs.	180 lbs.

SERIES 562SL Dimensional Drawing (1 lb. 13 oz.)

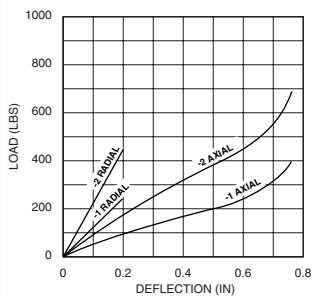


AXIAL STATIC LOAD RANGE - 562SL

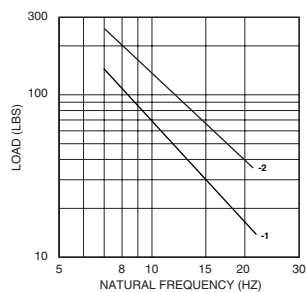
Code	Minimum	Maximum
-1	130 lbs.	260 lbs.
-2	260 lbs.	520 lbs.

558SL Series Performance Data

Load vs. Deflection

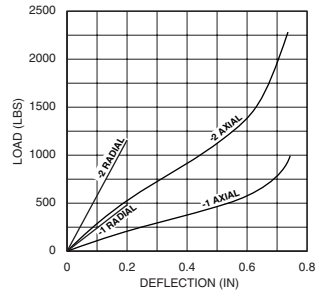


Load vs. Natural Frequency

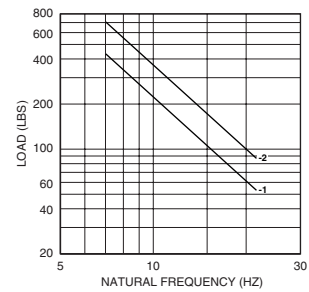


562SL Series Performance Data

Load vs. Deflection



Load vs. Natural Frequency



Barry Controls  
 40 Guest Street • Brighton, MA 02135-9105 • (617) 787-1555 • Fax (617) 787-7807

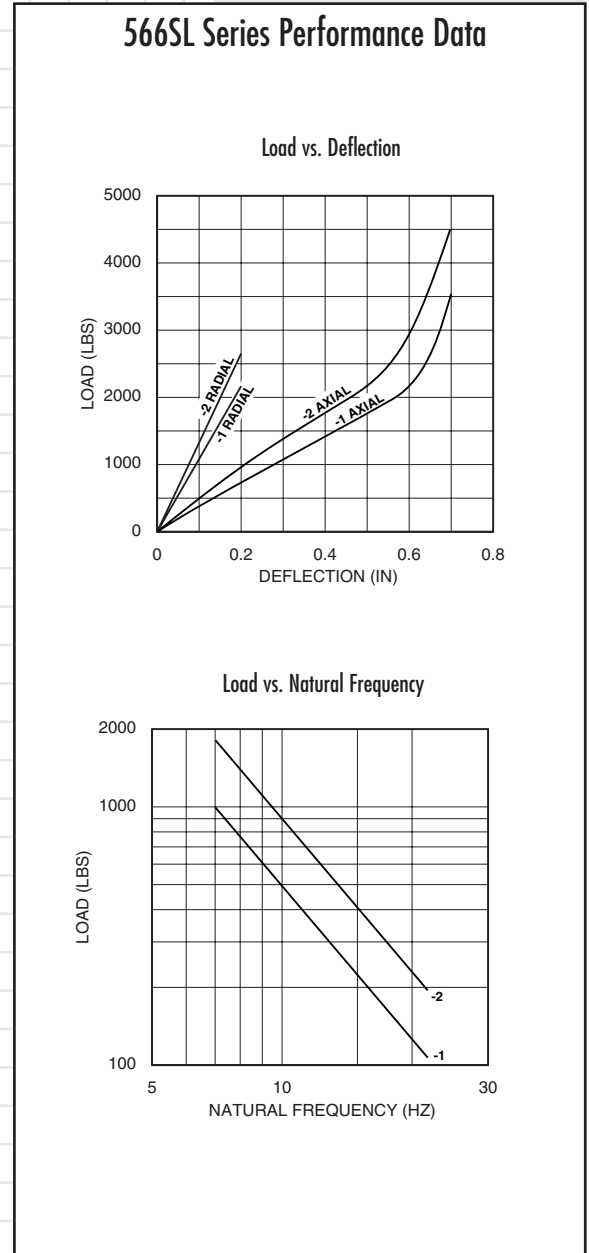
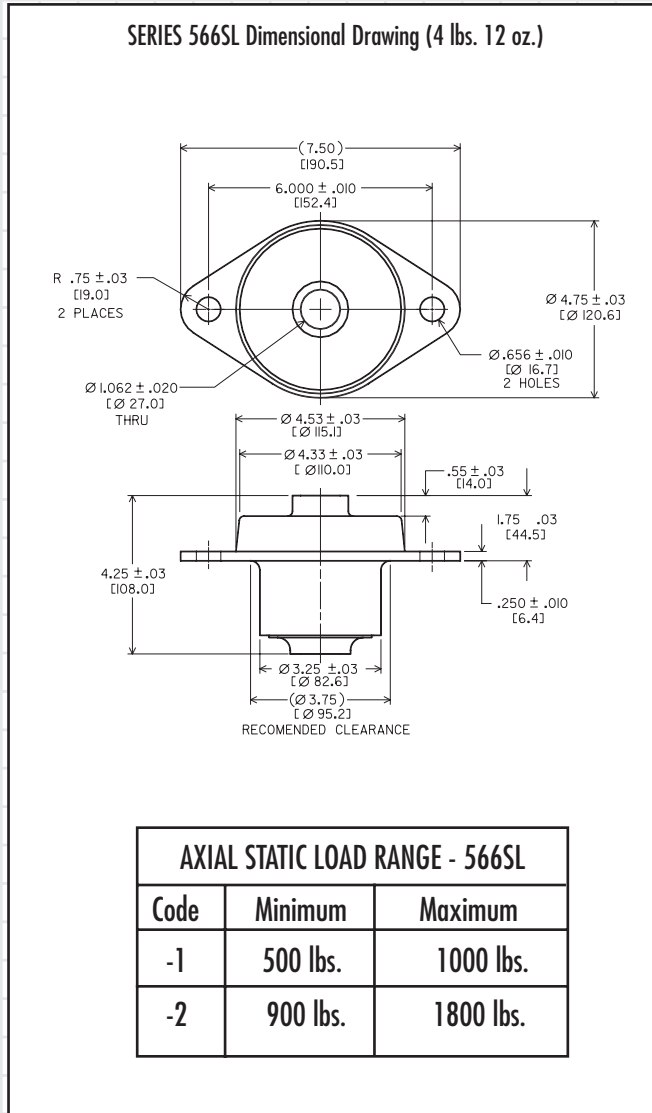
Dimensions and data are subject to change without notice.

For technical, design, or application assistance, call toll free:

1-800-BARRY MA

# 500SL Mount Series (566SL & Snubbing Washer)

## Dimensions & Performance Characteristics



Barry Controls  
40 Guest Street • Brighton, MA 02135-9105 • (617) 787-1555 • Fax (617) 787-7807

Dimensions and data are subject to change without notice.

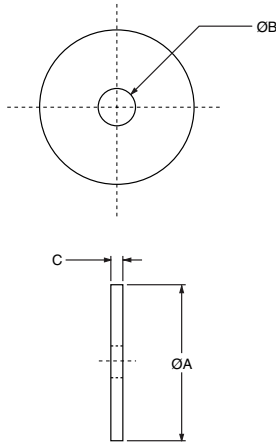
For technical, design, or application assistance, call toll free:

1-800-BARRY MA

# 500SL Mount Series (Snubbing Washer)

## Dimensions

### 500SL MOUNT SERIES SNUBBING WASHER



Size	"A" Dia.	"B" Dia.	"C"	Part #
558SL	2.00	.510	.125	R18733-2
562SL	2.50	.760	.188	R18733-4
566SL	3.25	1.010	.250	R18733-5

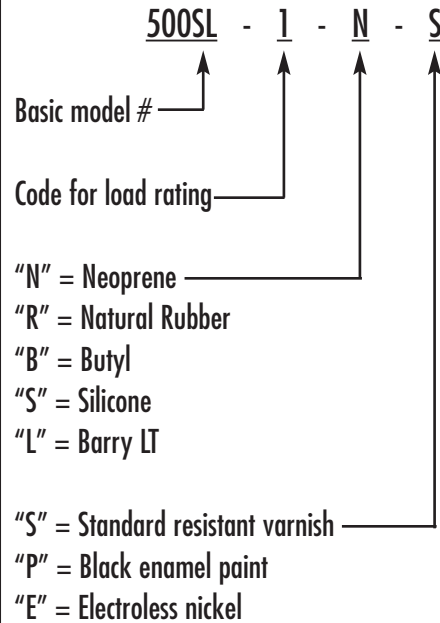
The use of snubbing washers is recommended to ensure proper static and dynamic loading of the isolator and retention of suspended equipment under severe shock environments.

Snubbing washers are ordered by separate part numbers as shown in the above table. The standard material is low-carbon steel and the standard finish is zinc plate. Other materials and finishes are available upon request.

Please consult with Barry Controls Applications Engineering at 1-800-Barry-MA for more information on the use of snubbing washers.



### HOW TO ORDER 500SL SERIES ISOLATORS



Standard suffix is "NS". Consult factory for availability and compatibility of other materials & finishes.



Barry Controls  
40 Guest Street • Brighton, MA 02135-9105 • (617) 787-1555 • Fax (617) 787-7807