

BARRY-BOND MOUNTS

Features

- One piece bonded construction
- Compact size
- Rebound feature formed during installation

Benefits

- Easy, low cost installation
- Cushioned snubbing in all directions
- Consistent performance
- Multi-directional vibration isolation
- Noise attenuation
- Fail-safe when used with recommended snubbing washers

Load Range

- Six sizes with axial load ranges from 75 to 2,100 lbs. per mount

Versatile, low cost elastomeric isolators protect against shock & vibration and reduce structure-borne noise in vehicular and industrial applications.



Barry-Bond Mounts are designed for multi-directional vibration isolation, shock attenuation and noise reduction due to structure-borne vibrations. These one-piece, fail-safe mounts are easy to install and provide consistent performance.

Applications

- Engines
- Operator compartments (cabs)
- Radiators
- Pumps
- Compressors
- Machinery

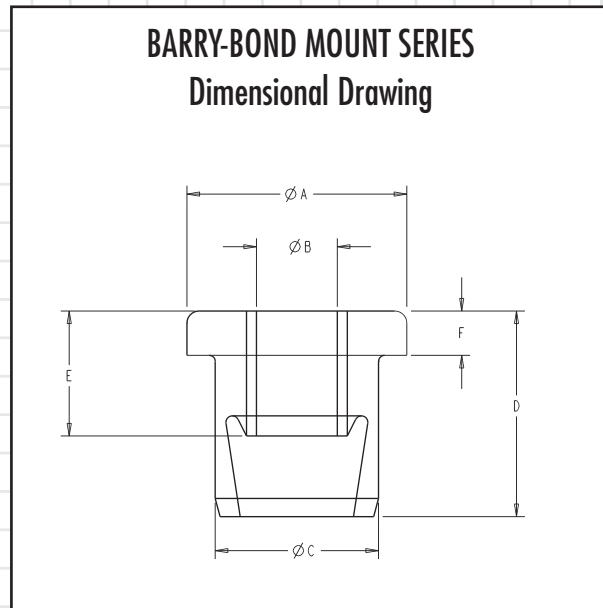
RESILIENT ELEMENT	Natural rubber
STANDARD MATERIALS	Steel
WEIGHT	BC-1120-1 & 3 .02 lbs. BC-1121-2 & 4 .10 lbs. BC-1122-2 & 4 .16 lbs. BC-1123-2 & 5 .36 lbs. BC-1124-2 & 5 .56 lbs. BC-1125-2 & 4 .86 lbs.

Environmental Data

- Natural Rubber elastomer has an operating temperature range of -40°C to +85°C.

Barry-Bond Mount Series

Dimensions & Load Ranges



Part Number	Drawing Number	Maximum Axial Static Load Rating (lbs.)	Part Dimensions (inches)					
			A	B	C	D	E	F
BC-1120-1	27365	75 lbs.	1.09	0.40	0.81	1.02	0.62	0.22
BC-1120-3		125 lbs.	1.09	0.40	0.81	1.02	0.62	0.22
BC-1121-2	27366	250 lbs.	1.75	0.532	1.24	1.25	1.00	0.41
BC-1121-4		450 lbs.	1.75	0.532	1.24	1.25	1.00	0.41
BC-1122-2	27367	350 lbs.	2.00	0.532	1.35	1.62	1.31	0.53
BC-1122-4		600 lbs.	2.00	0.532	1.35	1.62	1.31	0.53
BC-1123-2	27368	500 lbs.	2.50	0.648	1.62	2.00	1.69	0.62
BC-1123-5		1,000 lbs.	2.50	0.648	1.62	2.00	1.69	0.62
BC-1124-2	27369	750 lbs.	2.98	0.648	1.98	2.22	2.00	0.81
BC-1124-5		1,400 lbs.	2.98	0.648	1.98	2.22	2.00	0.81
BC-1125-2	27370	1,400 lbs.	3.74	0.803	2.23	2.48	2.00	1.00
BC-1125-4		2,100 lbs.	3.74	0.803	2.23	2.48	2.00	1.00



Barry Controls
40 Guest Street • Brighton, MA 02135-9105 • (617) 787-1555 • Fax (617) 787-7807

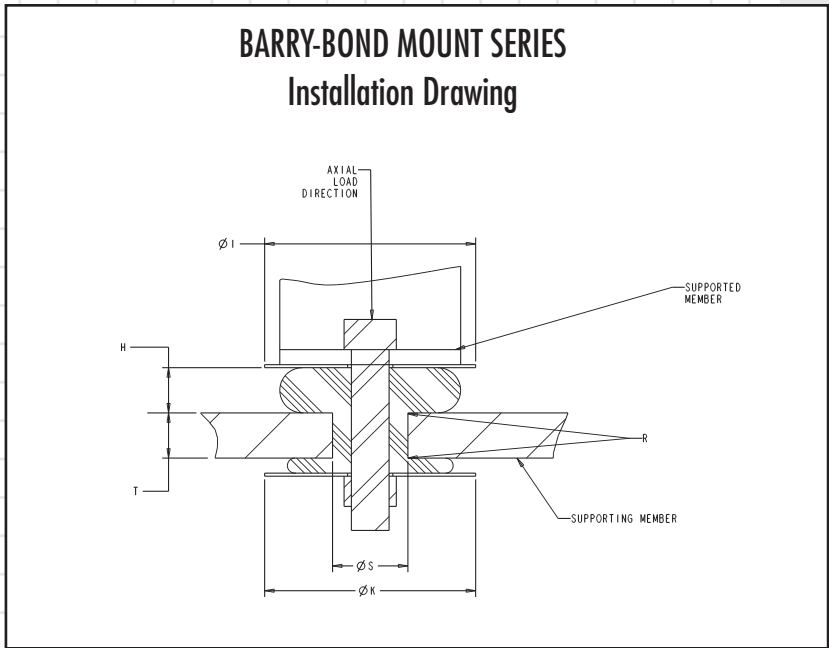
Dimensions and data are subject to change without notice.

For technical, design, or application assistance, call toll free:

1-800-BARRY MA

Barry-Bond Mount Series

Dimensions & Bolt Information



Part Number	Drawing Number	Required Mating Dimensions (Inches)						Recommended Bolt Information			
		H	I	K	S	T	R	Size	Grade		Torque (ft-lb)
BC-1120-1	27365	0.21	1.25	1.12	0.75	0.31	0.06	3/8"	2	5.8	23
BC-1120-3		0.21	1.25	1.12	0.75	0.31	0.06	3/8"	2	5.8	23
BC-1121-2	27366	0.38	2.00	1.50	1.12	0.38	0.06	1/2"	2	5.8	55
BC-1121-4		0.38	2.00	1.50	1.12	0.38	0.06	1/2"	2	5.8	55
BC-1122-2	27367	0.45	2.25	2.00	1.25	0.62	0.06	1/2"	2	5.8	55
BC-1122-4		0.45	2.25	2.00	1.25	0.62	0.06	1/2"	2	5.8	55
BC-1123-2	27368	0.56	2.88	2.25	1.50	0.75	0.06	5/8"	8	10.9	240
BC-1123-5		0.56	2.88	2.25	1.50	0.75	0.06	5/8"	8	10.9	240
BC-1124-2	27369	0.71	3.50	2.50	1.81	0.93	0.06	5/8"	8	10.9	240
BC-1124-5		0.71	3.50	2.50	1.81	0.93	0.06	5/8"	8	10.9	240
BC-1125-2	27370	0.94	4.25	3.00	2.00	0.75	0.12	3/4"	8	10.9	420
BC-1125-4		0.94	4.25	3.00	2.00	0.75	0.12	3/4"	8	10.9	420



Barry Controls
40 Guest Street • Brighton, MA 02135-9105 • (617) 787-1555 • Fax (617) 787-7807

Dimensions and data are subject to change without notice.

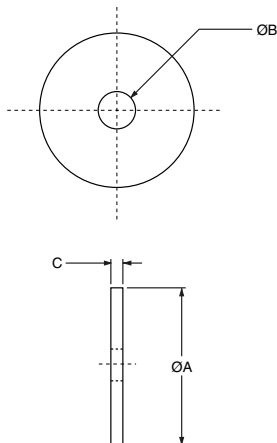
For technical, design, or application assistance, call toll free:

1-800-BARRY MA

Barry-Bond Mount Series

Snubbing Washer

BARRY-BOND MOUNT SERIES SNUBBING WASHER



The use of snubbing washers is recommended to ensure proper static and dynamic loading of the isolator and retention of suspended equipment under severe shock environments.

Snubbing washers are ordered by separate part numbers as shown in the table below. The standard material is low-carbon steel and the standard finish is zinc plate. Other materials and finishes are available upon request.

Please consult with Barry Controls Applications Engineering at 1-800-Barry-MA for more information on the use of snubbing washers.

Part Number	Head Washer Part Number	Part Dimensions (Inches)			Tail Washer Part Number	Part Dimensions (Inches)		
		A	B	C		A	B	C
BC-1120-1	9810276-02804	1.25	0.40	0.125	9810276-01804	1.12	0.40	0.125
BC-1120-3	9810276-02804	1.25	0.40	0.125	9810276-01804	1.12	0.40	0.125
BC-1121-2	9810276-04804	2.00	0.52	0.125	9810276-03804	1.50	0.52	0.125
BC-1121-4	9810276-04804	2.00	0.52	0.125	9810276-03804	1.50	0.52	0.125
BC-1122-2	9810276-05804	2.25	0.52	0.125	9810276-04804	2.00	0.52	0.125
BC-1122-4	9810276-05804	2.25	0.52	0.125	9810276-04804	2.00	0.52	0.125
BC-1123-2	9810276-08804	2.88	0.66	0.125	9810276-06804	2.25	0.64	0.125
BC-1123-5	9810276-08804	2.88	0.66	0.125	9810276-06804	2.25	0.64	0.125
BC-1124-2	9810276-10804	3.50	0.64	0.190	9810276-07804	2.50	0.64	0.125
BC-1124-5	9810276-10804	3.50	0.64	0.190	9810276-07804	2.50	0.64	0.125
BC-1125-2	9810276-11804	4.25	0.80	0.190	9810276-09804	3.00	0.80	0.190
BC-1125-4	9810276-11804	4.25	0.80	0.190	9810276-09804	3.00	0.80	0.190



Barry Controls
40 Guest Street • Brighton, MA 02135-9105 • (617) 787-1555 • Fax (617) 787-7807

Dimensions and data are subject to change without notice.

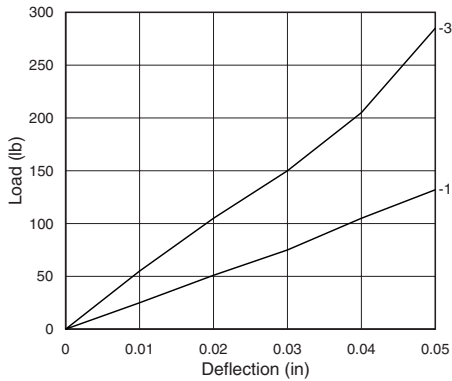
For technical, design, or application assistance, call toll free:

1-800-BARRY MA

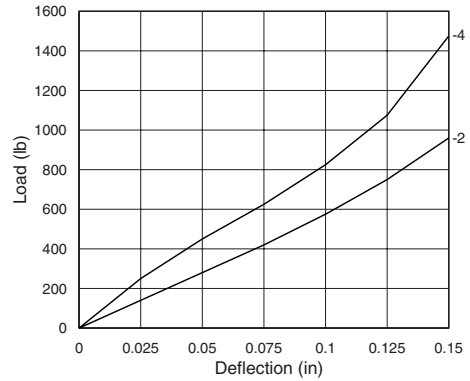
Barry-Bond Mount Series

Performance Characteristics

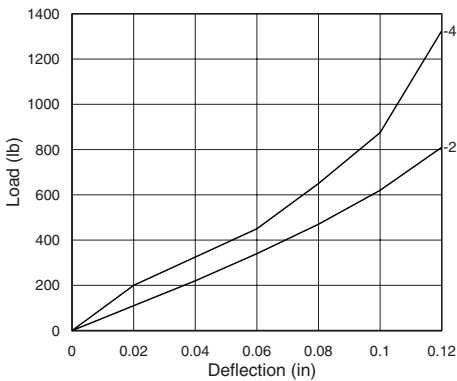
BC1120 Series Axial Load vs. Deflection



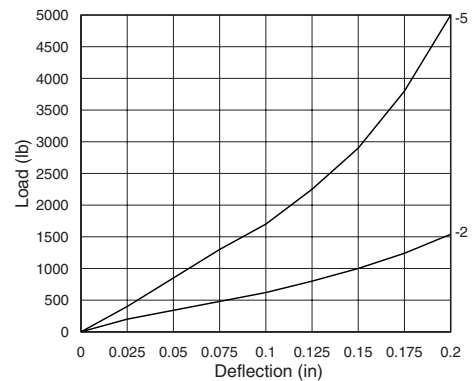
BC1122 Series Axial Load vs. Deflection



BC1121 Series Axial Load vs. Deflection



BC1123 Series Axial Load vs. Deflection



Barry Controls
 40 Guest Street • Brighton, MA 02135-9105 • (617) 787-1555 • Fax (617) 787-7807

Dimensions and data are subject to change without notice.

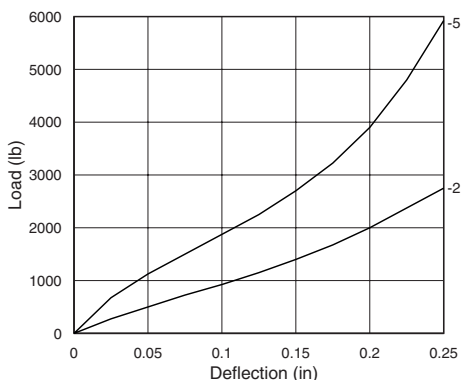
For technical, design, or application assistance, call toll free:

1-800-BARRY MA

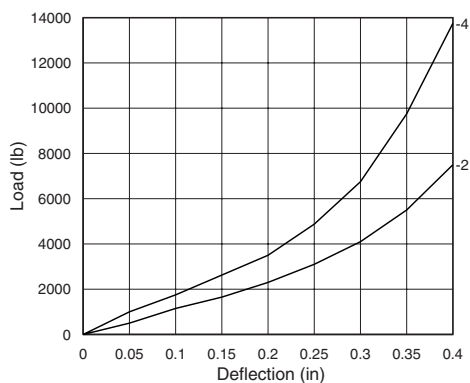
Barry-Bond Mount Series

Performance Characteristics

BC1124 Series Axial Load vs. Deflection



BC1125 Series Axial Load vs. Deflection



Barry Controls
 40 Guest Street • Brighton, MA 02135-9105 • (617) 787-1555 • Fax (617) 787-7807

Dimensions and data are subject to change without notice.

For technical, design, or application assistance, call toll free:

1-800-BARRY MA