

# HR MOUNT SERIES

## Features

- Wide load range
- Axial to radial stiffness of 6:1
- Low stiffness in roll mode
- Sturdy, reliable construction

## Benefits

- Built-in rebound protection
- Excellent performance even with difficult to isolate five, three, two or even single cylinder engines
- Overlapping load ranges
- Fail-safe when used with snubbing washer

## Load Range

- 2 Sizes and 5 stiffness from 25 - 400 lbs. per isolator

Vibration mounts for effective isolation of small to medium sized diesel engines.



Barry HR Series mounts are best suited for isolation of diesel engines with five or less cylinders for on or off-highway applications. The standard neoprene elastomer provides resistance to oils and most solvents. Other elastomers are available, consult factory for more information.

## Applications

- Small to medium diesel engines
- Generators
- Recreational/off road vehicles
- Farm and construction equipment
- Motors
- Machinery, pumps & compressors

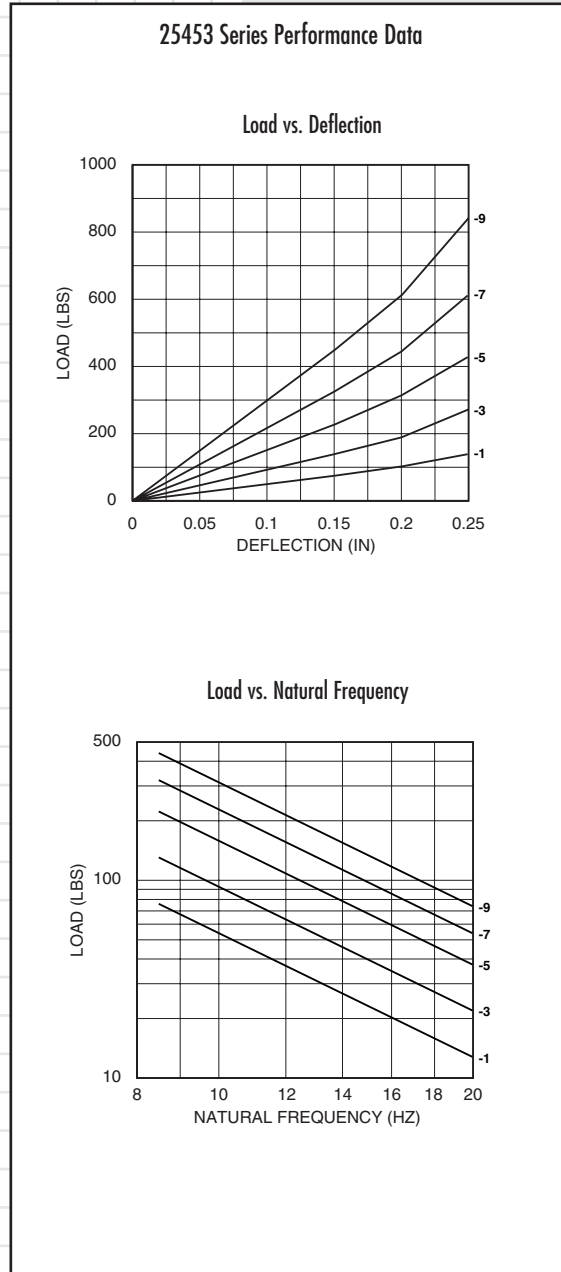
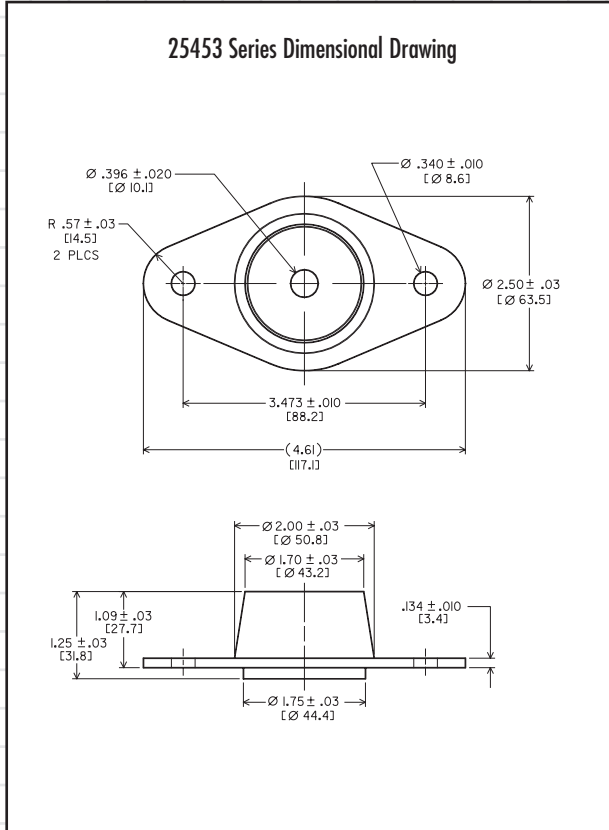
NATURAL FREQUENCY	10-20 Hertz
TRANSMISSIBILITY AT RESONANCE	8:1
RESILIENT ELEMENT	Neoprene
STANDARD MATERIALS	Steel and sintered metal
WEIGHT	7 oz. (25453) 9 oz. (25641)

## Environmental Data

- Neoprene elastomer has an operating temperature range of -40°C to +93°C and is resistant to oils, most solvents and ozone.

# HR Mount Series (25453)

## Dimensions & Performance Characteristics



AXIAL STATIC LOAD RANGE - 25453		
Code	Nominal	Color Code
-1	50 lbs.	Red
-3	90 lbs.	White
-5	150 lbs.	Blue
-7	215 lbs.	Purple
-9	300 lbs.	Gray



Barry Controls  
40 Guest Street • Brighton, MA 02135-9105 • (617) 787-1555 • Fax (617) 787-7807

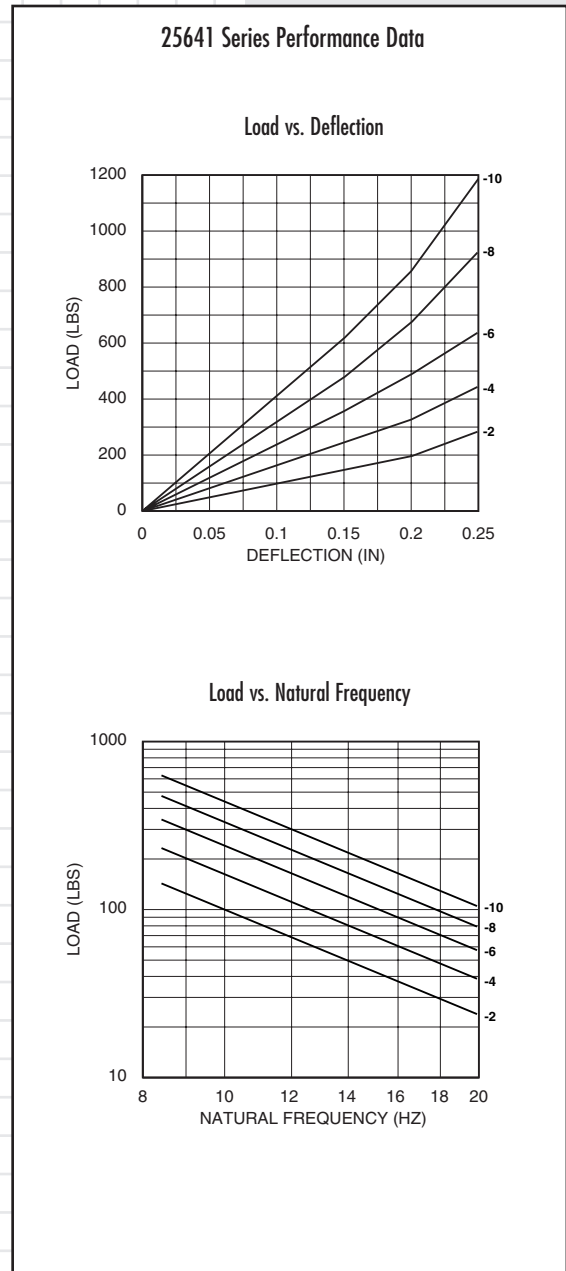
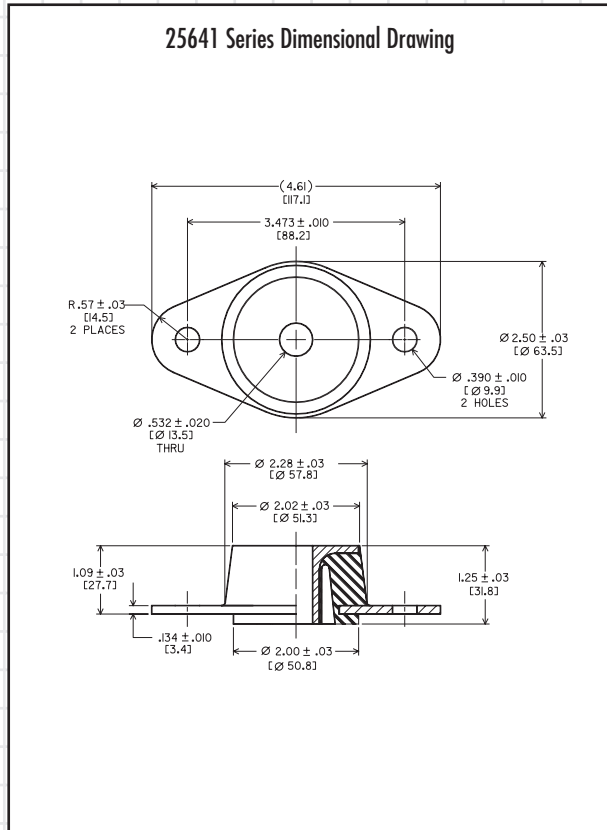
Dimensions and data are subject to change without notice.

For technical, design, or application assistance, call toll free:

1-800-BARRY MA

# HR Mount Series (25641)

## Dimensions & Performance Characteristics



AXIAL STATIC LOAD RANGE - 25641		
Code	Nominal	Color Code
-2	100 lbs.	Red
-4	155 lbs.	White
-6	230 lbs.	Blue
-8	320 lbs.	Purple
-10	420 lbs.	Gray



Barry Controls  
40 Guest Street • Brighton, MA 02135-9105 • (617) 787-1555 • Fax (617) 787-7807

Dimensions and data are subject to change without notice.

For technical, design, or application assistance, call toll free:

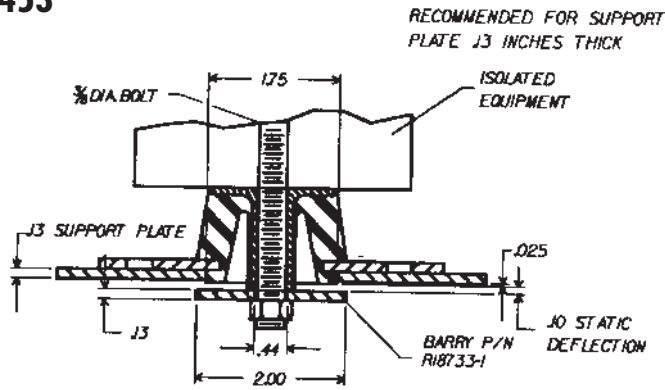
1-800-BARRY MA

# HR Mount Series

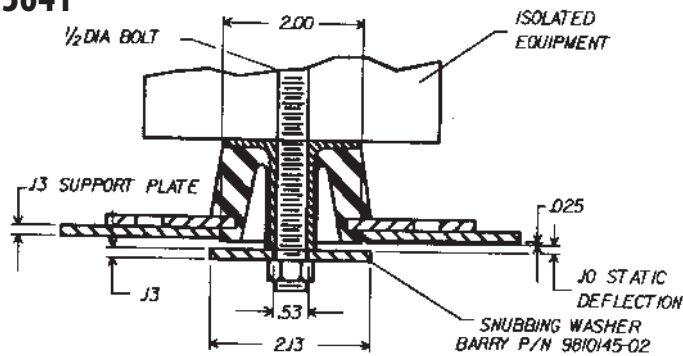
## Technical Data

### HR SERIES RECOMMENDED INSTALLATION

**25453**



**25641**



### HR SERIES MAXIMUM TIGHTENING TORQUES (FT - LBS)

Part #	Bolt Diameter	Torque (dry)	Torque (lubricated or plated)
25453	.375	45*	35*
25641	.500	120*	90*

\* = GRADE 8 BOLT TORQUE



Barry Controls  
40 Guest Street • Brighton, MA 02135-9105 • (617) 787-1555 • Fax (617) 787-7807

Dimensions and data are subject to change without notice.

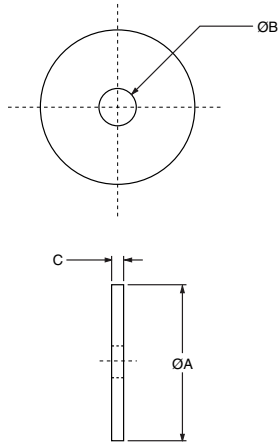
For technical, design, or application assistance, call toll free:

1-800-BARRY MA

# HR Mount Series (Snubbing Washer)

## Dimensions

### HR MOUNT SERIES SNUBBING WASHER



The use of snubbing washers is recommended to ensure proper static and dynamic loading of the isolator and retention of suspended equipment under severe shock environments.

Snubbing washers are ordered by separate part numbers as shown in the table below. The standard material is low-carbon steel and the standard finish is zinc plate. Other materials and finishes are available upon request.

Please consult with Barry Controls Applications Engineering at 1-800-Barry-MA for more information on the use of snubbing washers.

Size	"A" Dia.	"B" Dia.	"C"	Part #
25453	2.00	.45	.125	R18733-1
25641	2.13	.532	.134	9810145-02804



Barry Controls  
40 Guest Street • Brighton, MA 02135-9105 • (617) 787-1555 • Fax (617) 787-7807

Dimensions and data are subject to change without notice.

For technical, design, or application assistance, call toll free:

1-800-BARRY MA