

T-MOUNT SERIES (T22/T44/T64/T94)

Features

- Fail safe, all-attitude isolators
- Meets crash safety requirements of MIL-E-5400 (30g 11 millisecond half-sine pulse shock)
- Axial to radial stiffness of 1:1
- Isolates under sustained loadings of up to 5g's

Benefits

- Provides efficient vibration isolation at frequencies above 40 hertz
- Increased equipment reliability and extended component life

Load Range

- T22 = 4 ratings to 5 lbs. per mount
- T44 = 3 ratings to 20 lbs. per mount
- T64 = 3 ratings to 80 lbs. per mount
- T94 = 2 ratings to 150 lbs. per mount

General purpose, all-attitude isolators for mounting aircraft, shipboard or vehicular equipment.



Barry T-Mounts are general purpose isolators for mounting aircraft, shipboard or vehicular equipment in any attitude. They are ideally suited for applications requiring high frequency vibration isolation with low resonant amplification.

Applications

- Shipboard electronics
- Missile electronics
- Racking systems
- Aircraft & mobile applications
- Avionics & electronics

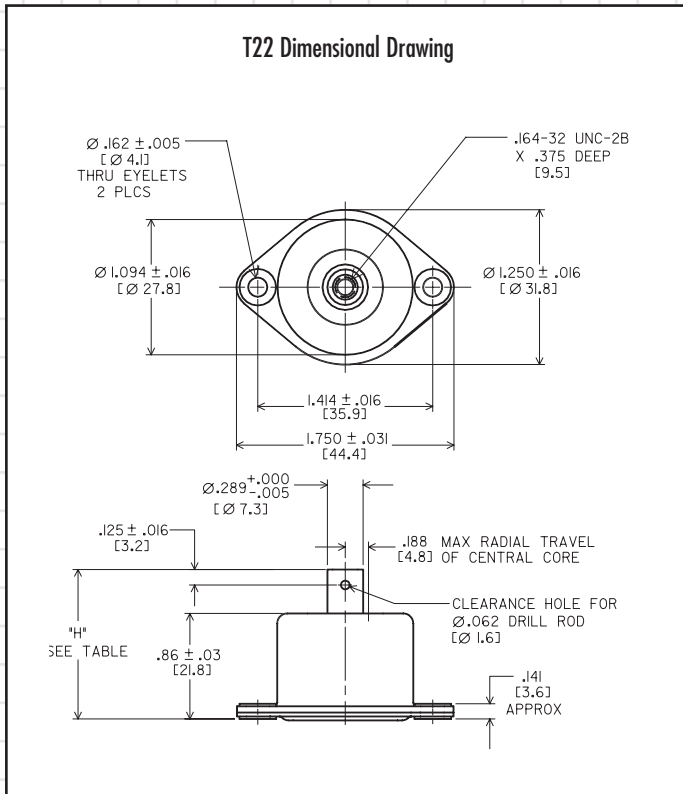
NATURAL FREQUENCY	15-40 Hertz
TRANSMISSIBILITY AT RESONANCE	4.0 Max.
RESILIENT ELEMENT	Hi-Damp Silicone
STANDARD MATERIALS	Varies with model
WEIGHT	T22 = 1.1 oz. T44 = 2.8 oz. T64 = 5.3 oz. T94 = 14.2 oz.

Environmental Data

- Hi-Damp Silicone exceeds the temperature requirements of MIL-E-5400 (-67°F to +300°F or -55°C to +150°C) operational and (-100°F to +300°F or -75°C to +150°C) storage.
- Meets MIL-E-5400 requirements for resistance to ozone, humidity, salt spray and fungus.
- Meets MIL-S-901 lightweight Grade B Navy high impact shock test requirements.

T-Mount Series (T22)

Dimensions & Performance Characteristics



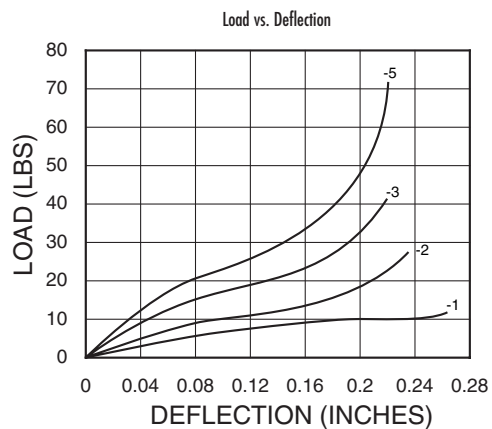
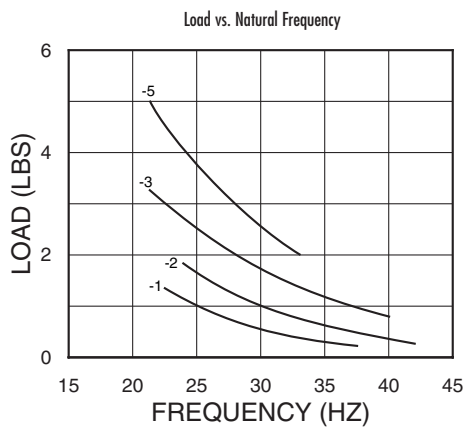
T22 SERIES "H" DIMENSION

Compressed	.91
Approx. Free	1.22
Max. Extended	1.56

T22 SERIES LOAD RANGE DATA

Part #	Max. Load/Isolator
T22-AB-1	1 lb.
T22-AB-2	2 lbs.
T22-AB-3	3 lbs.
T22-AB-5	5 lbs.

T22 Performance Data



Barry Controls
40 Guest Street • Brighton, MA 02135-9105 • (617) 787-1555 • Fax (617) 787-7807

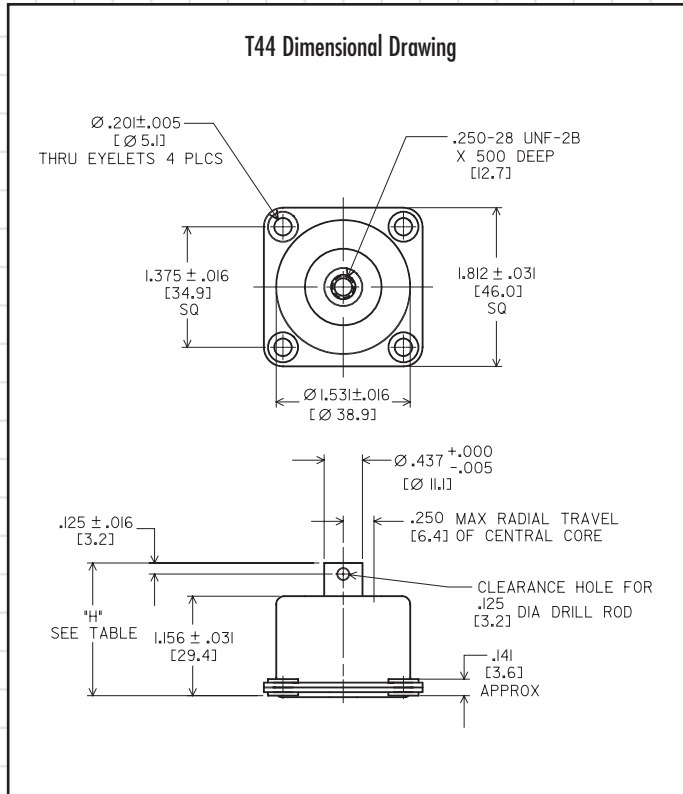
Dimensions and data are subject to change without notice.

For technical, design, or application assistance, call toll free:

1-800-BARRY MA

T-Mount Series (T44)

Dimensions & Performance Characteristics



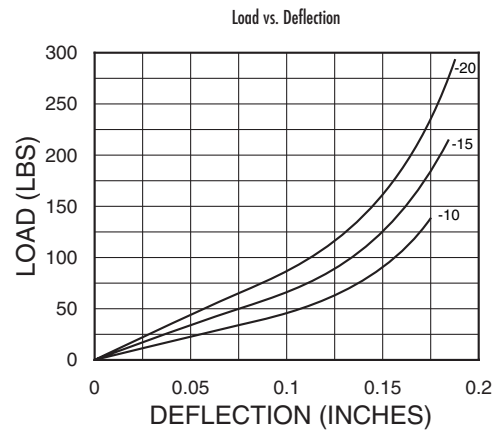
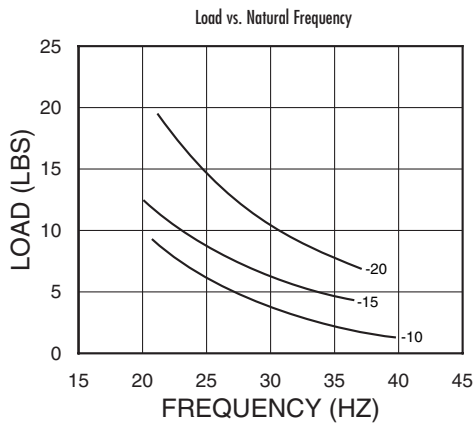
T44 SERIES "H" DIMENSION

Compressed	1.19
Approx. Free	1.50
Max. Extended	1.88

T44 SERIES LOAD RANGE DATA

Part #	Max. Load/Isolator
T44-AB-10	10 lbs.
T44-AB-15	15 lbs.
T44-AB-20	20 lbs.

T44 Performance Data



Barry Controls
40 Guest Street • Brighton, MA 02135-9105 • (617) 787-1555 • Fax (617) 787-7807

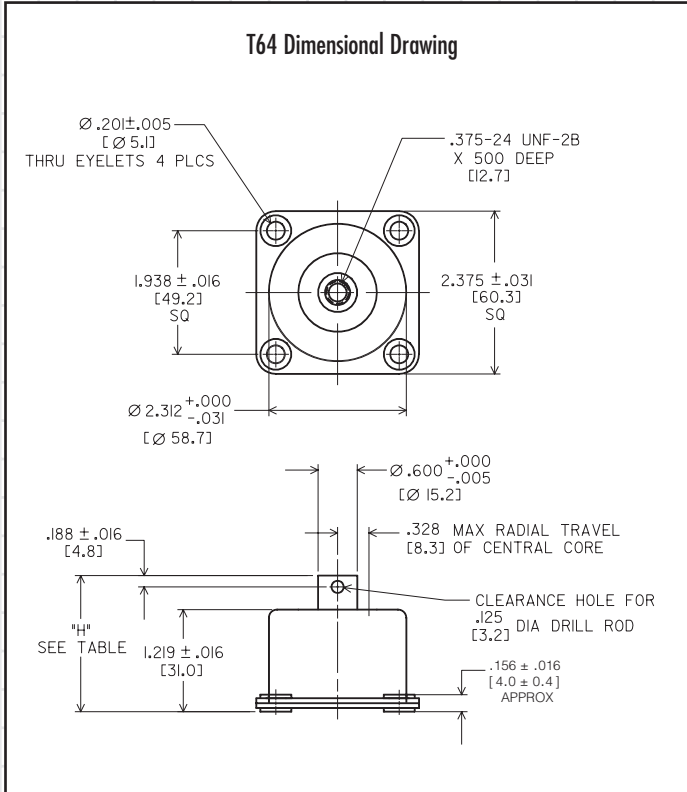
Dimensions and data are subject to change without notice.

For technical, design, or application assistance, call toll free:

1-800-BARRY MA

T-Mount Series (T64)

Dimensions & Performance Characteristics



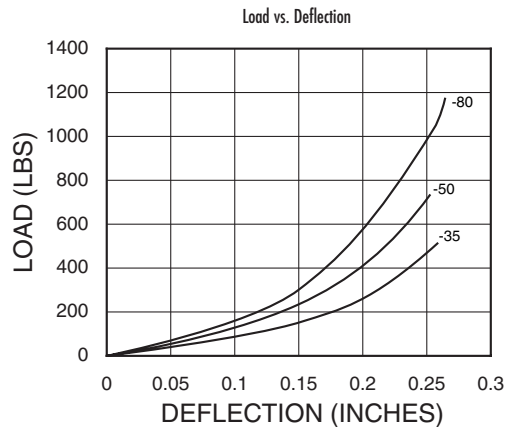
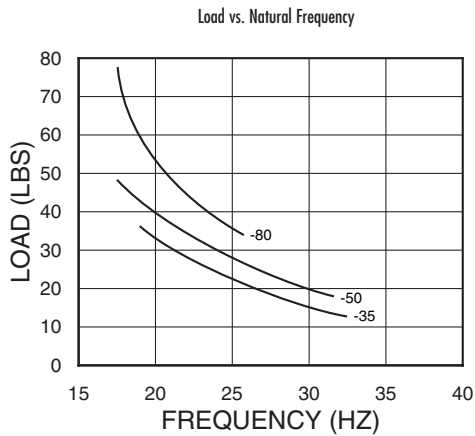
T64 SERIES "H" DIMENSION

Compressed	1.25
Approx. Free	1.62
Max. Extended	1.94

T64 SERIES LOAD RANGE DATA

Part #	Max. Load/Isolator
T64-AB-35	35 lbs.
T64-AB-50	50 lbs.
T64-AB-80	80 lbs.

T64 Performance Data



Barry Controls
40 Guest Street • Brighton, MA 02135-9105 • (617) 787-1555 • Fax (617) 787-7807

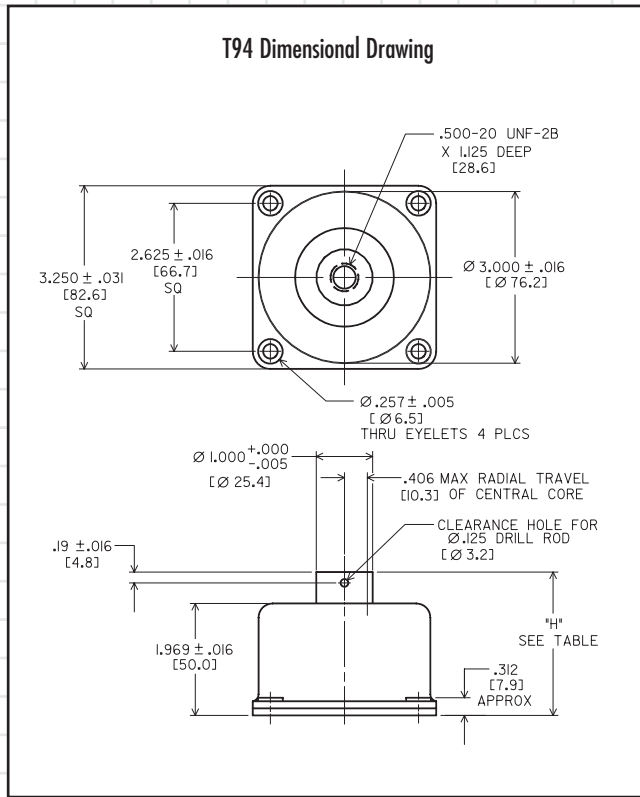
Dimensions and data are subject to change without notice.

For technical, design, or application assistance, call toll free:

1-800-BARRY MA

T-Mount Series (T94)

Dimensions & Performance Characteristics



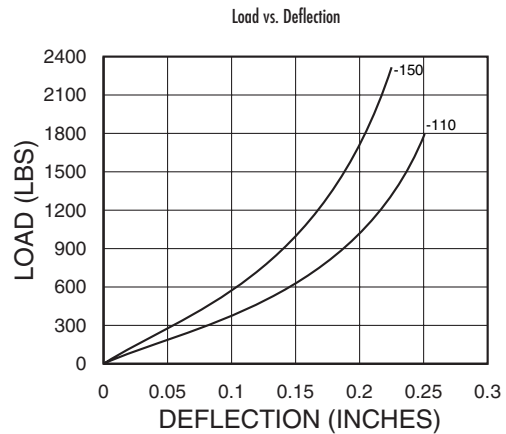
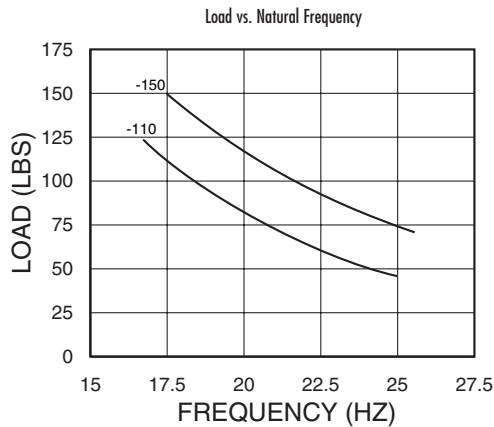
T94 SERIES "H" DIMENSION

Compressed	2.13
Approx. Free	2.54
Max. Extended	3.06

T94 SERIES LOAD RANGE DATA

Part #	Max. Load/Isolator
T94-AB-110	110 lbs.
T94-AB-150	150 lbs.

T94 Performance Data



Barry Controls
 40 Guest Street • Brighton, MA 02135-9105 • (617) 787-1555 • Fax (617) 787-7807

Dimensions and data are subject to change without notice.

For technical, design, or application assistance, call toll free:

1-800-BARRY MA