

RING & BUSHING MOUNT SERIES

Features

- Can be installed in parallel or series for greater load capacity
- Ribbed protrusions act as load bearing members
- Available in four stiffnesses (-030, -040, -050 and -060)
- Designed for base mounting

Benefits

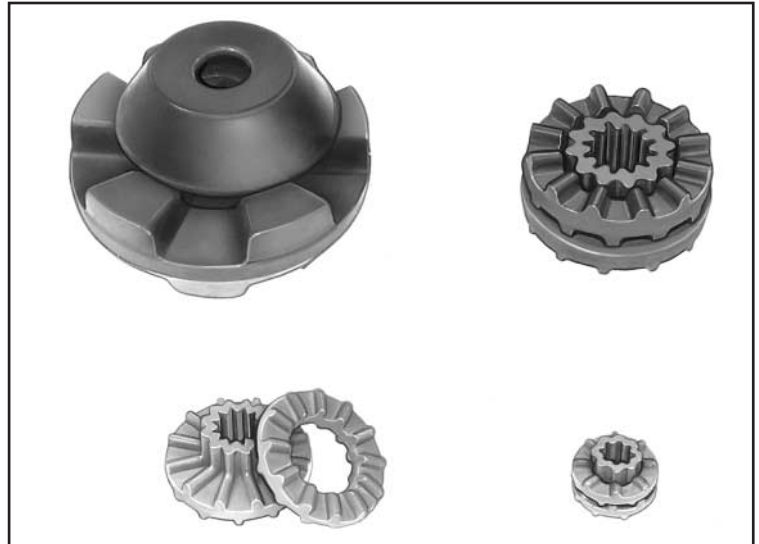
- Highly efficient noise reduction
- Absorb vibration and shock perpendicular to mounting axis
- WB4 bushings have radial fingers on one surface only to act as rebound (shock absorbing) members

Load Range

- WR1/WB1 = 4 load ratings to 12 lbs. per isolator
- WR3/WB3 = 4 load ratings to 35 lbs. per isolator
- WR4/WB4 = 4 load ratings to 75 lbs. per isolator
- WR6/WB6 = 4 load ratings to 350 lbs. per isolator



Versatile, low cost elastomeric isolators protect against shock and vibration and reduce structure borne noise.



Barry Ring & Bushing Isolators consist of an elastomeric ring and elastomeric bushing and are designed to be directly incorporated into the structural components of the equipment to be mounted. Any number of these isolators can be installed in parallel for greater load capacity and may be stacked in series when greater deflection capacity is required.

Applications

- Office machines
- Motors
- Fans & blowers
- HVAC equipment
- Electronics equipment
- Telecommunications equipment

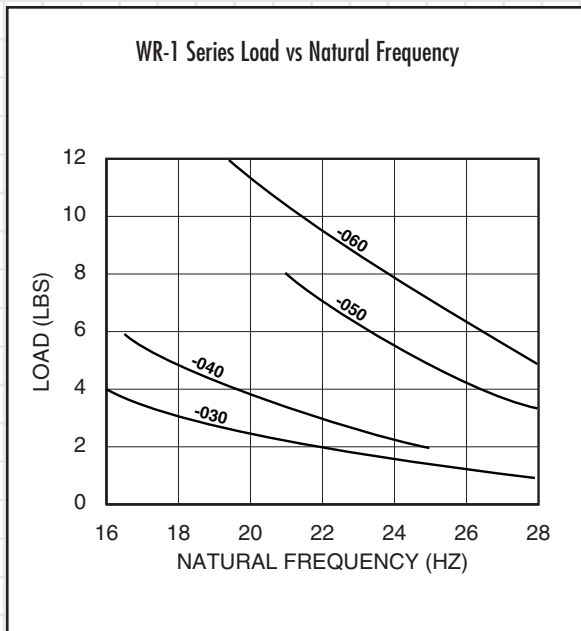
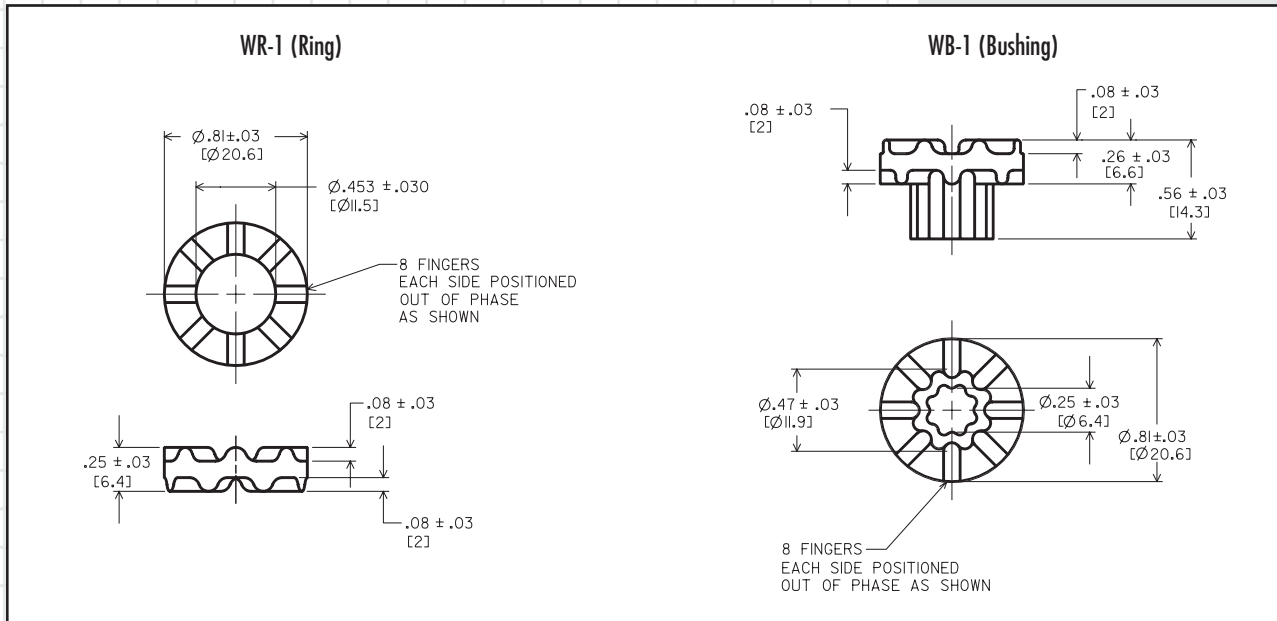
NATURAL FREQUENCY	See tables
TRANSMISSIBILITY AT RESONANCE	10:1
RESILIENT ELEMENT	Natural rubber
STANDARD MATERIALS	None
WEIGHT	WB6 = 3.37 oz. (All other WR/WB parts weigh less than 1.0 oz.)

Environmental Data

- Natural rubber elastomer is compatible with most industrial and commercial environments and has an operating temperature range of -40°F to +180°F (-40°C to +83°C).
- Special materials are available upon special order.

Ring & Bushing Mount Series (WR-1/WB-1)

Dimensions & Performance Characteristics



RECOMMENDED LOAD LIMITS FOR RING & BUSHING ASSEMBLY		
Assembly	Min. Load	Max. Load
WR1-030/WB1-030	1 lb.	4 lbs.
WR1-040/WB1-040	2 lbs.	6 lbs.
WR1-050/WB1-050	3 lbs.	8 lbs.
WR1-060/WB1-060	5 lbs.	12 lbs.

Dimensions and data are subject to change without notice.

For technical, design, or application assistance, call toll free:

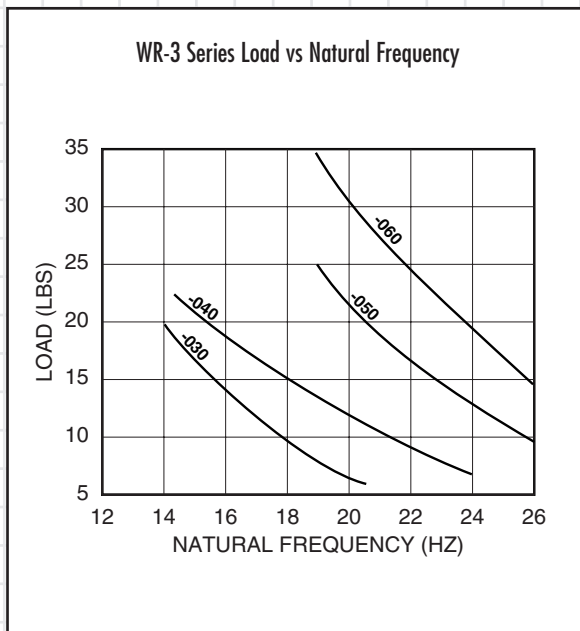
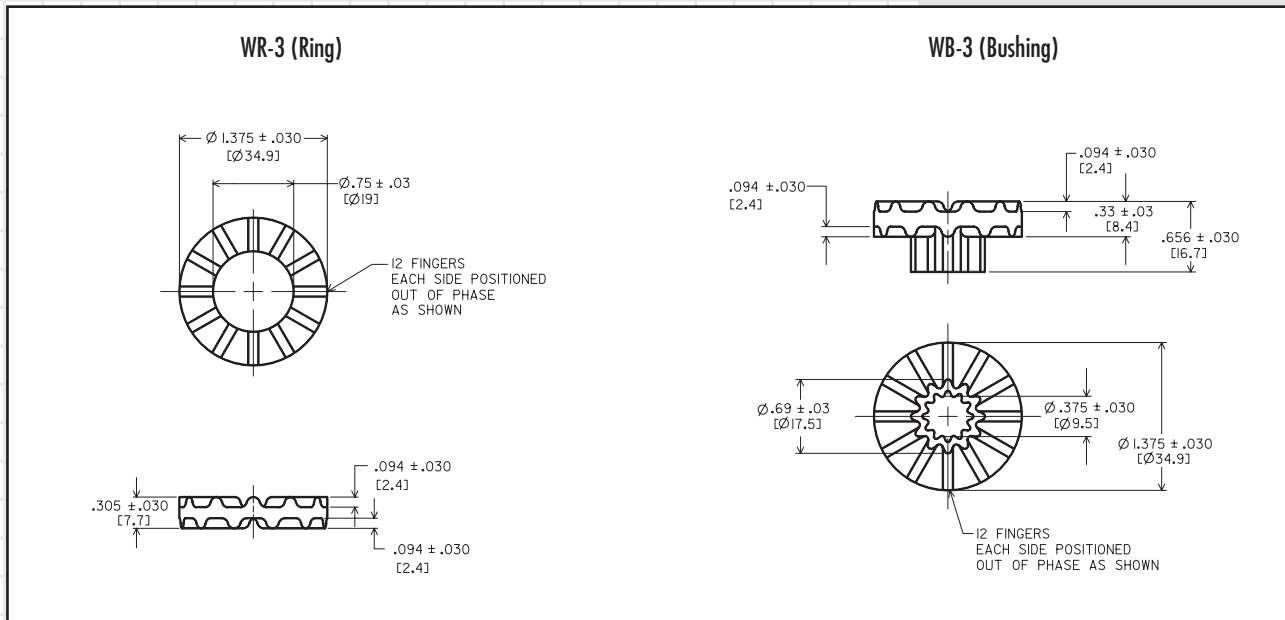
1-800-BARRY MA



Barry Controls
40 Guest Street • Brighton, MA 02135-9105 • (617) 787-1555 • Fax (617) 787-7807

Ring & Bushing Mount Series (WR-3/WB-3)

Dimensions & Performance Characteristics



RECOMMENDED LOAD LIMITS FOR RING & BUSHING ASSEMBLY		
Assembly	Min. Load	Max. Load
WR3-030/WB3-030	6 lb.	20 lbs.
WR3-040/WB3-040	7 lbs.	23 lbs.
WR3-050/WB3-050	10 lbs.	25 lbs.
WR3-060/WB3-060	15 lbs.	35 lbs.



Barry Controls
 40 Guest Street • Brighton, MA 02135-9105 • (617) 787-1555 • Fax (617) 787-7807

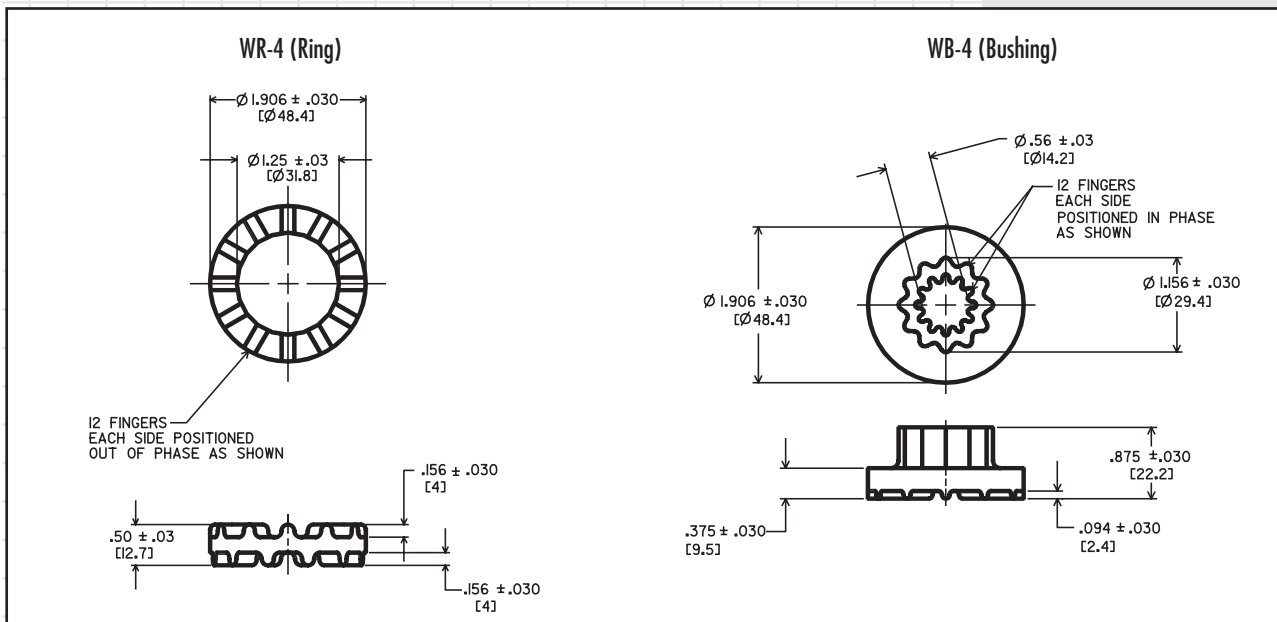
Dimensions and data are subject to change without notice.

For technical, design, or application assistance, call toll free:

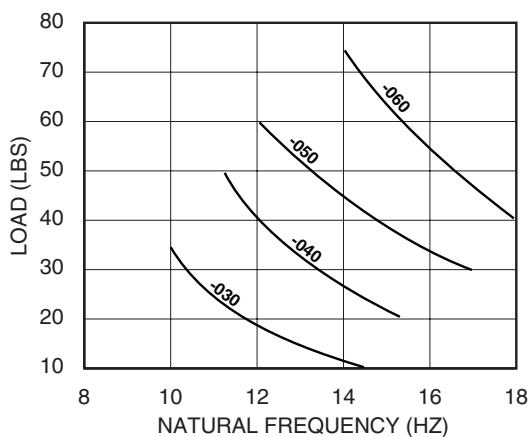
1-800-BARRY MA

Ring & Bushing Mount Series (WR-4/WB-4)

Dimensions & Performance Characteristics



WR-4 Series Load vs Natural Frequency



RECOMMENDED LOAD LIMITS FOR RING & BUSHING ASSEMBLY

Assembly	Min. Load	Max. Load
WR4-030/WB4-030	10 lbs.	35 lbs.
WR4-040/WB4-040	20 lbs.	50 lbs.
WR4-050/WB4-050	30 lbs.	60 lbs.
WR4-060/WB4-060	40 lbs.	75 lbs.



Barry Controls
 40 Guest Street • Brighton, MA 02135-9105 • (617) 787-1555 • Fax (617) 787-7807

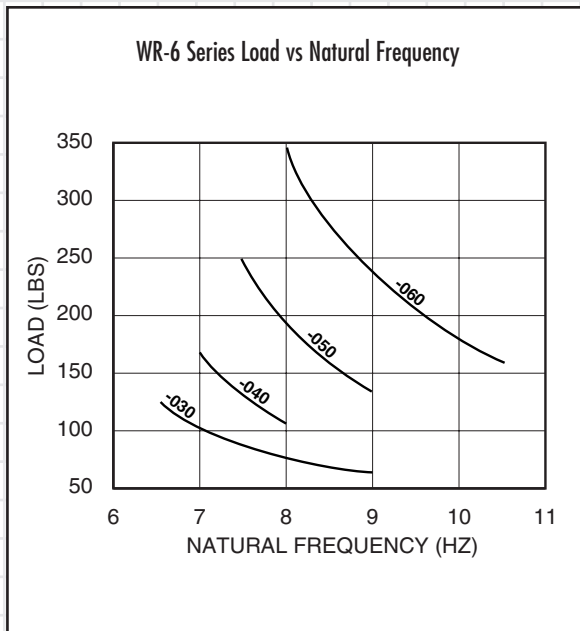
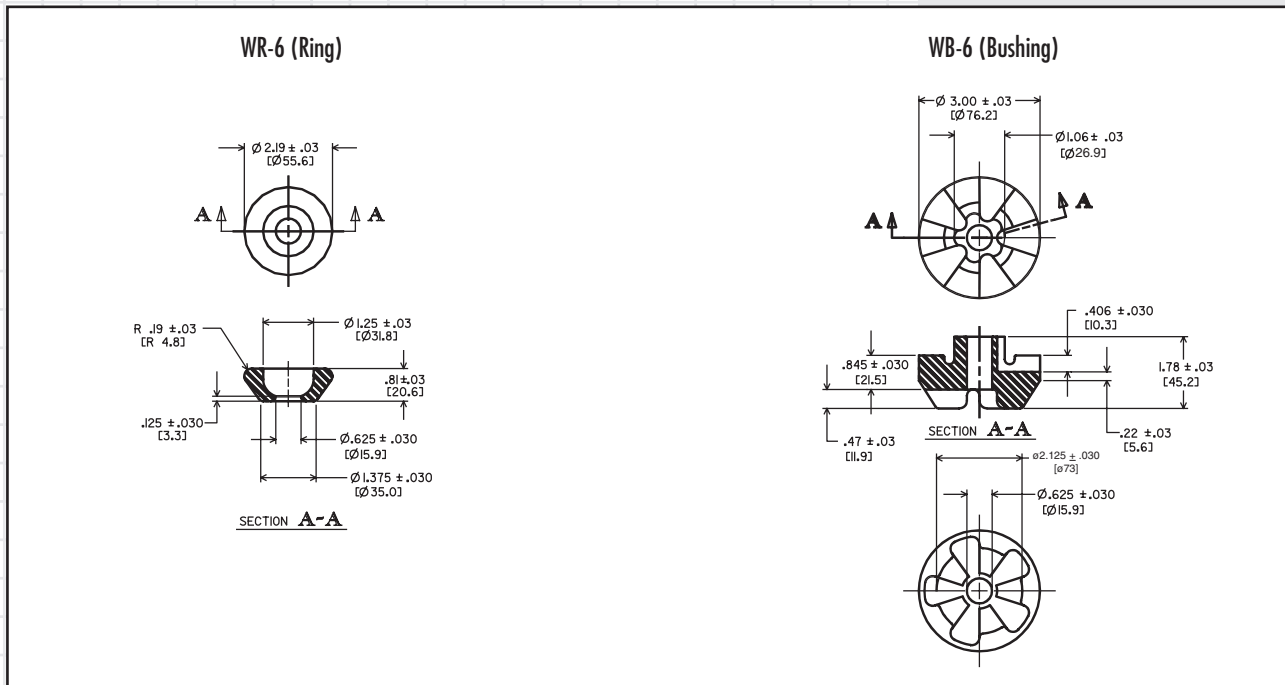
Dimensions and data are subject to change without notice.

For technical, design, or application assistance, call toll free:

1-800-BARRY MA

Ring & Bushing Mount Series (WR-6/WB-6)

Dimensions & Performance Characteristics



RECOMMENDED LOAD LIMITS FOR RING & BUSHING ASSEMBLY		
Assembly	Min. Load	Max. Load
WR6-030/WB6-030	60 lb.	120 lbs.
WR6-040/WB6-040	110 lbs.	160 lbs.
WR6-050/WB6-050	135 lbs.	250 lbs.
WR6-060/WB6-060	160 lbs.	350 lbs.



Barry Controls
40 Guest Street • Brighton, MA 02135-9105 • (617) 787-1555 • Fax (617) 787-7807

Dimensions and data are subject to change without notice.

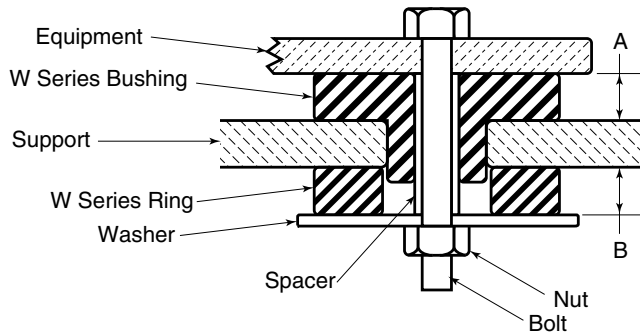
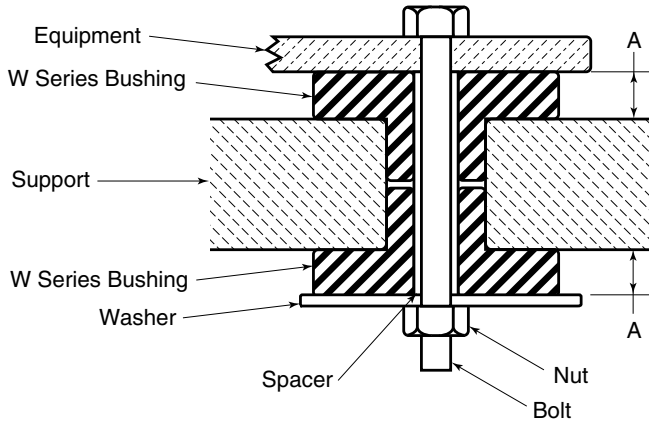
For technical, design, or application assistance, call toll free:

1-800-BARRY MA

Ring & Bushing Mount Series

Installation Data & Specifications

TYPICAL INSTALLATION - RING & BUSHING



Installed Dimensions

	A	B
WR1	-	.23
WB1	.23	-
WR3	-	.30
WB3	.30	-
WR4	-	.45
WB4	.33	-
WR6	-	.75
WB6	1.25	-



Barry Controls
40 Guest Street • Brighton, MA 02135-9105 • (617) 787-1555 • Fax (617) 787-7807

Dimensions and data are subject to change without notice.

For technical, design, or application assistance, call toll free:

1-800-BARRY MA