

# 2K MOUNT SERIES

## Features

- Combines shock and vibration isolation in a single isolator
- Protects from vibratory inputs as low as 10 Hz
- Designed for base mounting only
- Wide load range for most applications

## Benefits

- Elastomeric shock attenuating elements have as much as 1 inch of available deflection (1.5 inches for 2KS)
- Limit shock transmissions to 20g's when subjected to a five foot hammer blow per MIL-S-901
- Many custom versions are available. Consult factory for more information

## Load Range

- 2K1 Series = 4 load ratings from 1 - 10 lbs. per mount
- 2K2 Series = 8 load ratings from 4 - 90 lbs. per mount
- 2KS Series for loads from 250 - 6,000 lbs.



Two stage shock mount and vibration isolator for severe dynamic environments such as shipboard and ground vehicles.



Barry 2K-Series mounts offer the advantage of superior vibration and shock protection for a wide range of loads in a single compact unit. These isolators are ideal for isolating naval sonar equipment, shipboard electronics and communications.

## Applications

- Naval sonar equipment
- Shipboard electronics
- Radar installations
- Computer & video displays

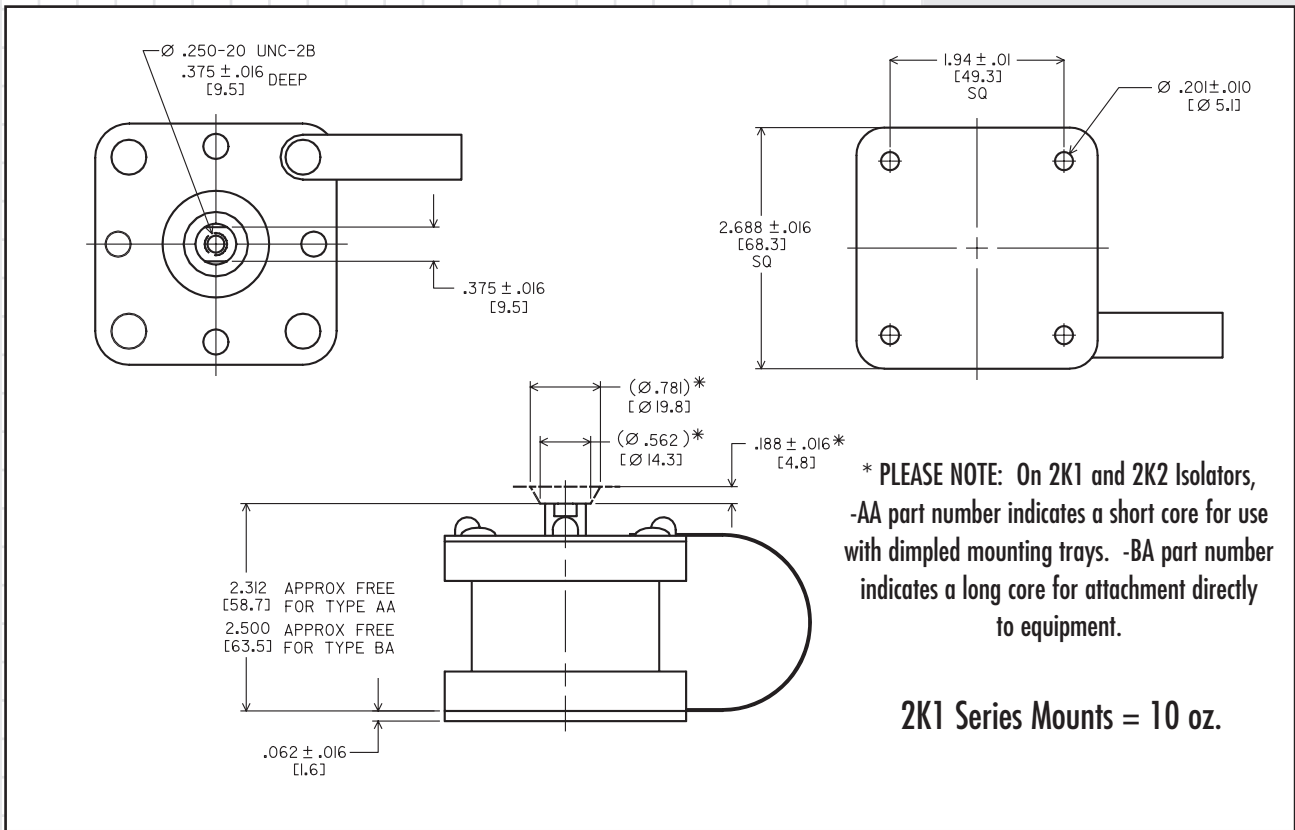
	Vibration Element	Shock Element
NATURAL FREQUENCY	6-8 Hertz vertical	15 Hertz vertical
TRANSMISSIBILITY AT RESONANCE	2.5 Max.	10 Max.
RESILIENT ELEMENT	Friction damped spring	Neoprene or Nitrile elastomer
STANDARD MATERIALS	Varies with model Standard Beryllium Copper Grounding Strap	
WEIGHT	See Dimensional Drawings	

## Environmental Data

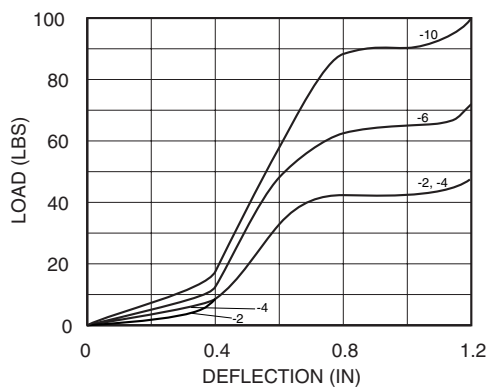
- 2K1 and 2K2 isolators are for use with lightweight MIL-S-901 applications.
- 2KS systems are for use with medium weight MIL-S-901 applications.
- Isolators and systems met MIL-STD-16400 inclination, temperature, humidity and salt spray specifications, MIL-STD-167 vibration tests and MIL-M-17185 environmental and oil immersion tests.
- Operating temperature range is -20°F to +180°F (-30°C to +82°C).
- Isolators are unaffected by humidity, sand, dust and fungus.

# 2K Series (2K1)

## Dimensions & Performance Characteristics



2K1 Load vs. Deflection



2K1 LOAD RATINGS

PART #	STATIC LOAD RANGE /ISOLATOR (LBS.)
2K1-AA-2 & BA-2	1-2
2K1-AA-4 & BA-4	2-4
2K1-AA-6 & BA-6	4-6
2K1-AA-10 & BA-10	6-10



Barry Controls  
 40 Guest Street • Brighton, MA 02135-9105 • (617) 787-1555

Dimensions and data are subject to change without notice.

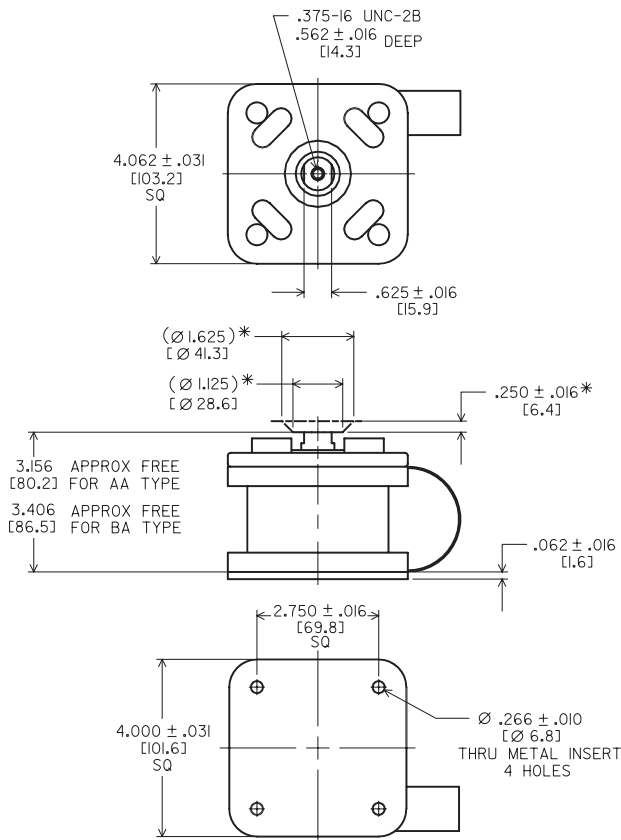
For technical, design, or application assistance, call toll free:

1-800-BARRY MA

# 2K Series (2K2)

## Dimensions & Performance Characteristics

2K2 Series Mounts = 1.6 lbs.

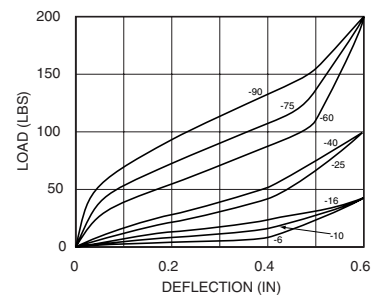


**\* PLEASE NOTE:** On 2K1 and 2K2 Isolators, -AA part number indicates a short core for use with dimpled mounting trays. -BA part number indicates a long core for attachment directly to equipment.

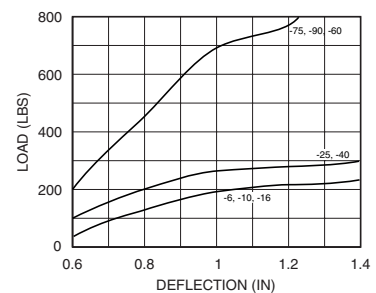
### 2K2 LOAD RATINGS

PART #	STATIC LOAD RANGE /ISOLATOR (LBS.)
2K2-AA-6 & BA-6	4-6
2K2-AA-10 & BA-10	6-10
2K2-AA-16 & BA-16	10-16
2K2-AA-25 & BA-25	16-25
2K2-AA-40 & BA-40	25-40
2K2-AA-60 & BA-60	40-60
2K2-AA-75 & BA-75	60-75
2K2-AA-90 & BA-90	75-90

2K2 Load vs. Deflection (0 to .6 inches)



2K2 Load vs. Deflection (0.6 to 1.4 inches)



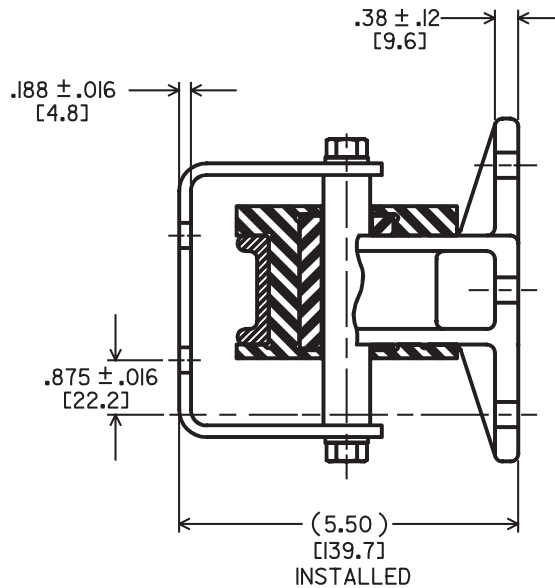
Barry Controls

40 Guest Street • Brighton, MA 02135-9105 • (617) 787-1555 • Fax (617) 787-7807

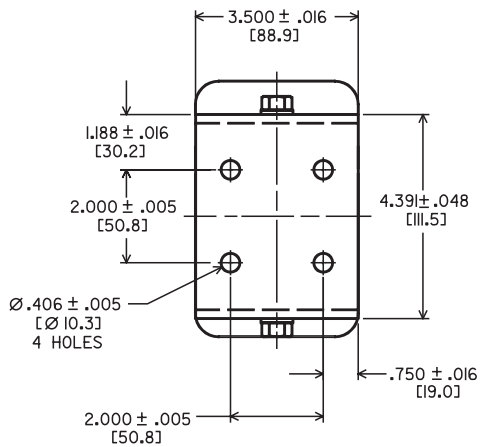
# 2K Mount Series Lightweight Stabilizer

## Dimensional Drawing

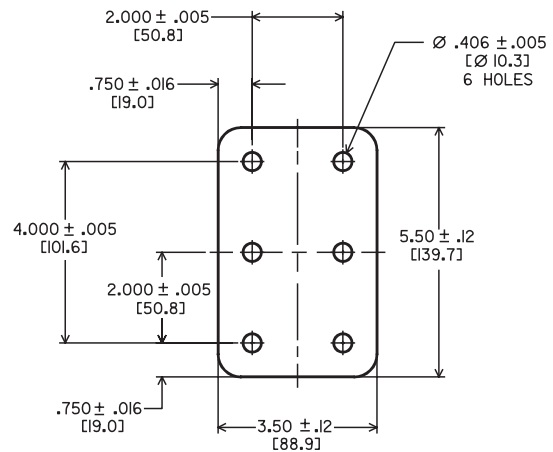
### LIGHTWEIGHT STABILIZER 21335-5 DIMENSIONAL DRAWINGS



### 2K EQUIPMENT INTERFACE



### 2K BULKHEAD INTERFACE



Barry Controls  
 40 Guest Street • Brighton, MA 02135-9105 • (617) 787-1555 • Fax (617) 787-7807

Dimensions and data are subject to change without notice.

For technical, design, or application assistance, call toll free:

1-800-BARRY MA