

# 5200 MOUNT SERIES (5200/5200HT)

## Features

- All-attitude mounting with rugged, fail-safe construction
- Axial to radial stiffness of 1:0.6
- Low profile mounts
- Wide range of load ratings for both stationary and mobile environments

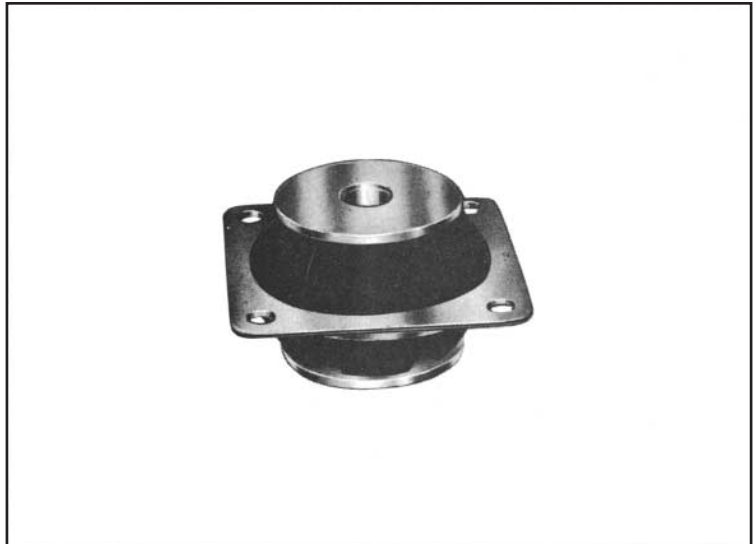
## Benefits

- Isolator provides effective vibration isolation in any attitude
- Fail-safe design captivates the mounted equipment even if the elastomeric elements should be destroyed

## Load Range

- 4 load ratings to 50 lbs. per mount

Versatile all-attitude isolators for vibration and shock protection.



Barry 5200 Series Mounts are for applications where protection is required from shock, vibration or noise. The fail-safe, low profile construction of 5200 Series Isolators are ideal for use where space is at a minimum.

## Applications

- Airborne electronics and racking
- Ground transportation applications
- Severe random vibration environments
- Electric motors

NATURAL FREQUENCY	15-40 Hertz
TRANSMISSIBILITY AT RESONANCE	4.0 Max. (Hi-Damp Silicone) 10.0 Max. (Neoprene & Natural Rubber)
RESILIENT ELEMENT	Hi-Damp Silicone, Neoprene, or Natural Rubber
STANDARD MATERIALS	Zinc plated steel
WEIGHT	5200 = 2.5 oz. 5200H = 3.5 oz.

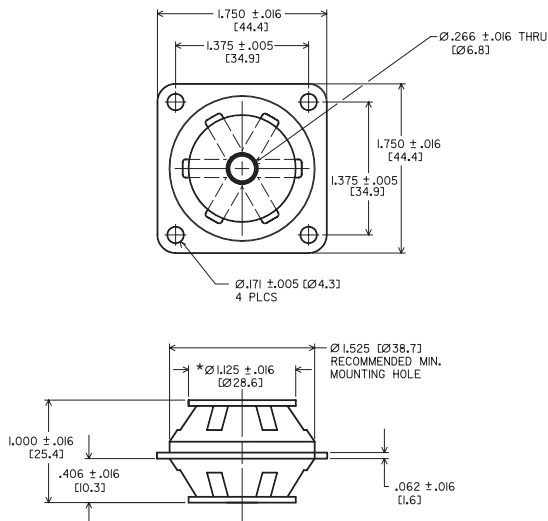
## Environmental Data

- Hi-Damp Silicone version meets shock & vibration requirements of MIL-E-5400 with an operating temperature range of -67°F to +300°F (-55°C to +150°C).
- Neoprene version is available for use where temperature extremes are not encountered, but resistance to oil or ozone is required. Operational temperature range is -20°F to +180°F (-30°C to +83°C).

# 5200 Mount Series

## Dimensions & Performance Characteristics

5200 SERIES DIMENSIONAL DRAWING



TYPE 5200 SHOWN FOR VARIATIONS SEE SECTION ON HOW TO ORDER

\* $\varnothing 1.375$  for 'N' prefix (Hi-Damp) Parts

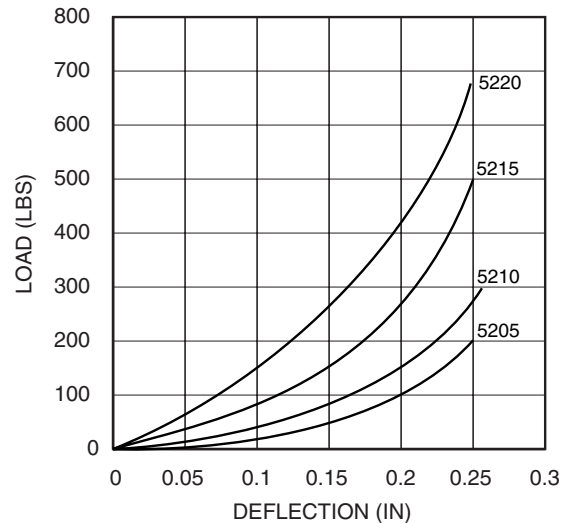
5200 SERIES LOAD RATINGS

Part #*	Maximum Load / Isolator (lbs.)	Maximum Load / Isolator (lbs.)
	- Stationary -	- Mobile -
5205	15	4 - 7
5210	25	8 - 11
5215	35	12 - 17
5220	50	18 - 30

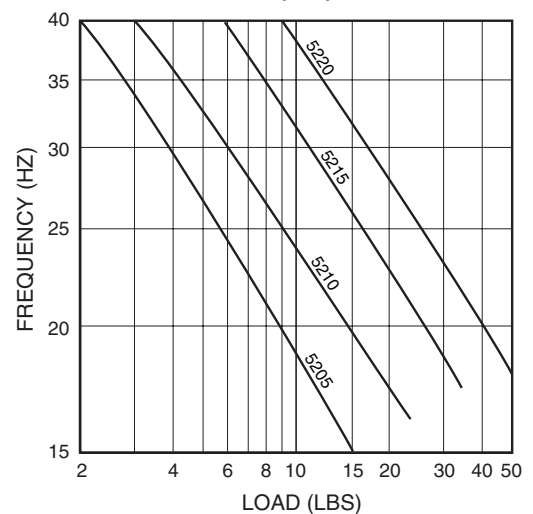
\*Part Numbers shown above are basic numbers. For complete part numbers please see page 78.

5200 Series Performance Data

Load vs. Deflection



Natural Frequency vs. Load



Barry Controls  
40 Guest Street • Brighton, MA 02135-9105 • (617) 787-1555 • Fax (617) 787-7807

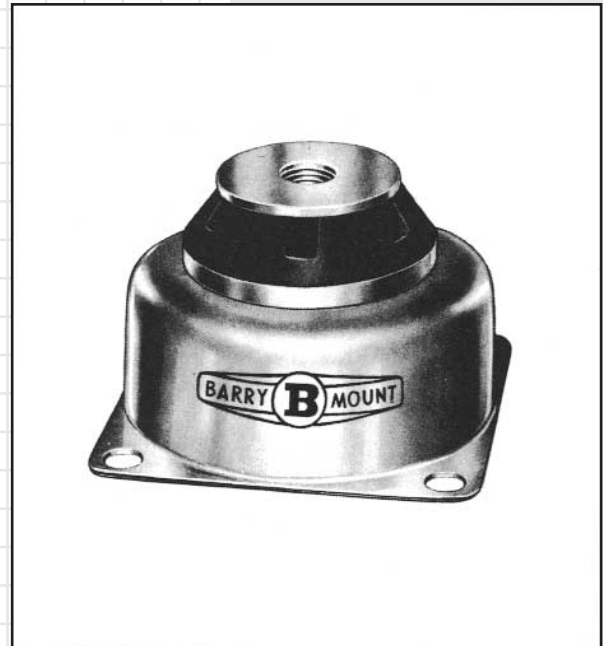
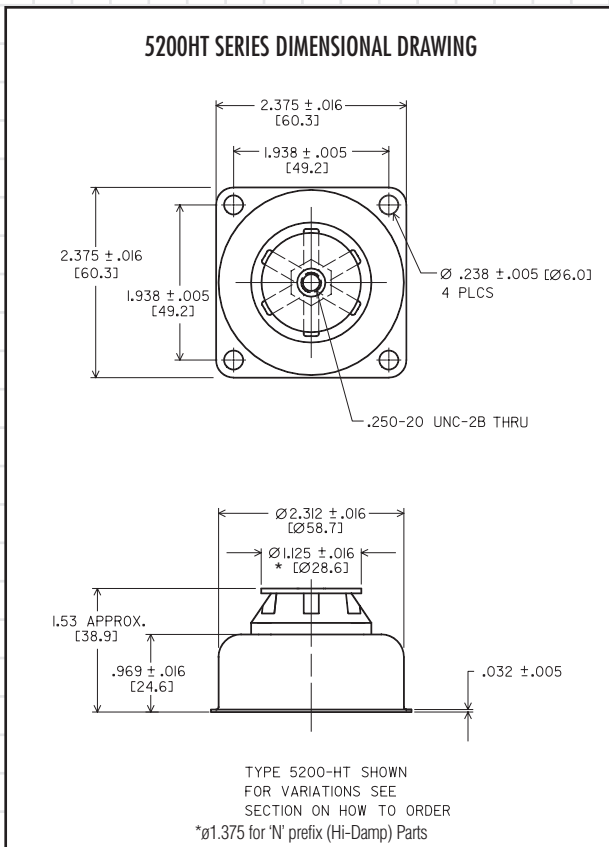
Dimensions and data are subject to change without notice.

For technical, design, or application assistance, call toll free:

1-800-BARRY MA

# 5200 Mount Series (5200HT)

## Dimensions & Performance Characteristics



### HOW TO ORDER 5200 SERIES ISOLATORS

#### PLATE STYLE ISOLATORS (5200 SERIES)

Letter N placed at beginning for Silicone  
 Letter N placed at end for Neoprene  
 (Absence of letter N indicates special natural rubber version)

**N 5205-T X N**

- Use T for 1/4-20 UNC 2B threaded core
- Leave blank for through hole

- Use X for hex end of tapped core opposite 1.5 dia. ring
- Use Y for hex end of tapped core on side nearest 1.5 dia. ring

#### CUP STYLE ISOLATORS (5200H SERIES)

Letter N placed at beginning for Silicone  
 Letter N placed at end for Neoprene  
 (Absence of letter N indicates special natural rubber version)

**N 5205-H T N**

- H denotes cup-style version

- Use T for 1/4-20 UNC 2B threaded core (hex is inside cup, opposite 1.5" dia. ring)
- Leave blank for through hole



Barry Controls  
 40 Guest Street • Brighton, MA 02135-9105 • (617) 787-1555 • Fax (617) 787-7807

Dimensions and data are subject to change without notice.

For technical, design, or application assistance, call toll free:

1-800-BARRY MA