

633A MOUNT SERIES

Features

- Effectively isolate disturbing frequencies as low as 900 rpm (15 Hz)
- Cold-rolled steel construction
- Optional stainless steel version available upon request for highly corrosive and marine applications.
- Elastomer in shear design
- Compressive to shear stiffness of 4:1

Benefits

- Effectively interrupts noise transmission paths to prevent sounding board amplification
- Extends machinery life
- Resistant to oils, most solvents and ozone
- Provides up to 90% isolation efficiency at 1,500 rpm (25 Hz)

Load Range

- 5 load ratings up to 260 lbs. per mount

Low-profile, low frequency elastomeric noise and vibration isolators for medium weight industrial equipment.



Barry 633A Series Mounts are medium weight mounts normally used for vertically applied loads to prevent transmission of noise and vibration caused by rotation of imbalanced equipment (i.e. generators, blowers, pumps, etc...)

Applications

- Industrial equipment, tools and machinery
- Generators
- Pumps & blowers
- HVAC equipment
- Chillers

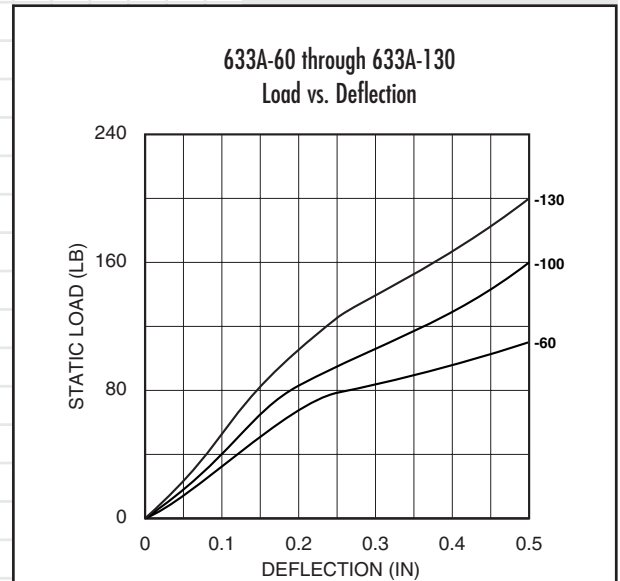
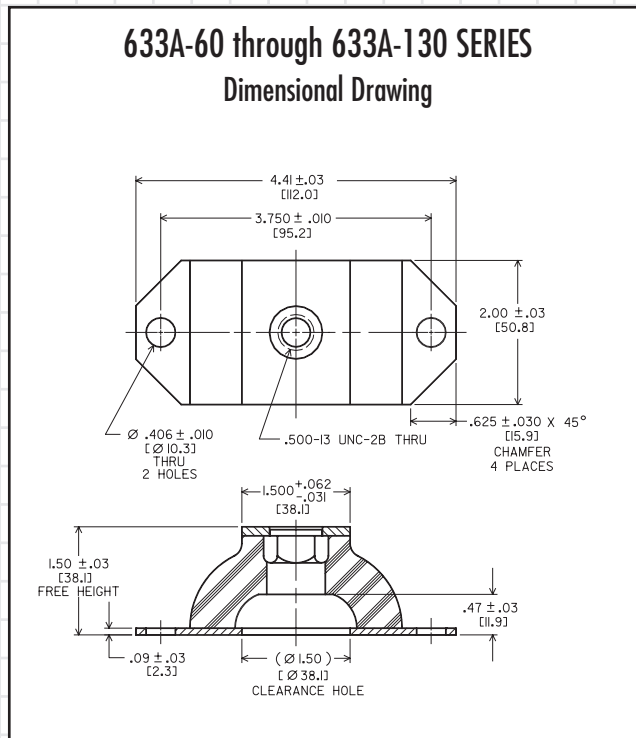
NATURAL FREQUENCY	8 Hertz
TRANSMISSIBILITY AT RESONANCE	8:1
RESILIENT ELEMENT	Neoprene
STANDARD MATERIALS	Cold Rolled Steel or Stainless Steel
WEIGHT	633A-60 through 130 = 7 oz. 633A-200 and 260 = 16 oz.

Environmental Data

- Neoprene elastomer has an operating temperature range of -40°F to +200°F (-40°C to +93°C) and is resistant to oils, most solvents and ozone.
- Stainless Steel version is corrosion resistant for marine applications.

633A Series (633A-60 through 633A-130)

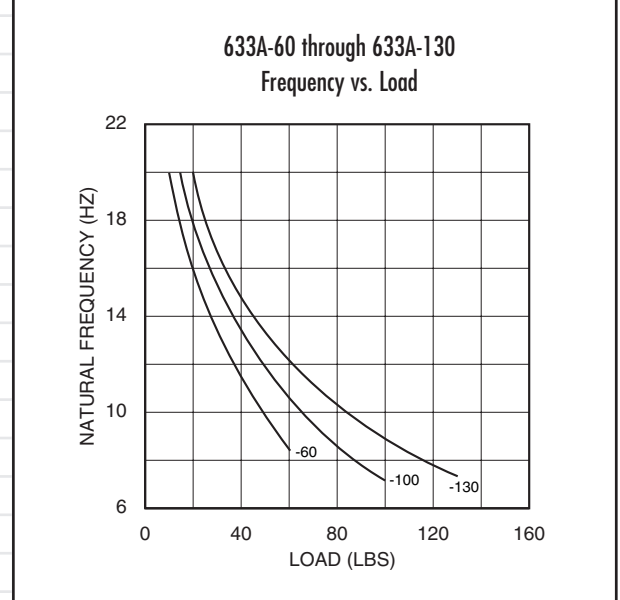
Dimensions & Performance Characteristics



633A SERIES LOAD RANGES

Part #	Maximum Static Load/Isolator (lbs.)
633A-60	60
633A-100	100
633A-130	130

NOTE: For stainless steel applications please add "SS" to part number. Example:
For Stainless Steel 633A-60 order as part number 633A-60SS



Barry Controls
40 Guest Street • Brighton, MA 02135-9105 • (617) 787-1555 • Fax (617) 787-7807

Dimensions and data are subject to change without notice.

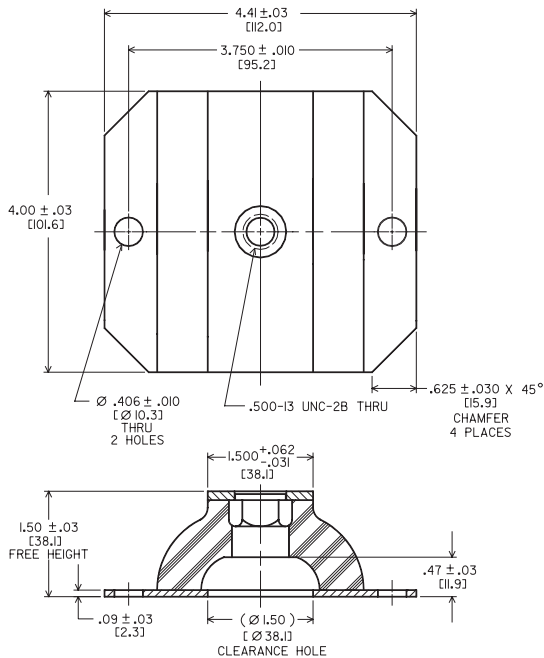
For technical, design, or application assistance, call toll free:

1-800-BARRY MA

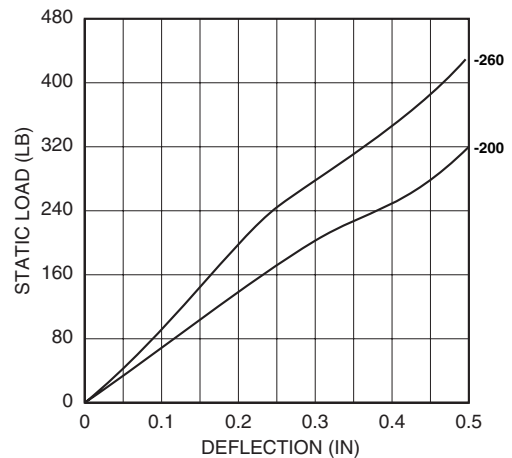
633A Series (633A-260)

Dimensions & Performance Characteristics

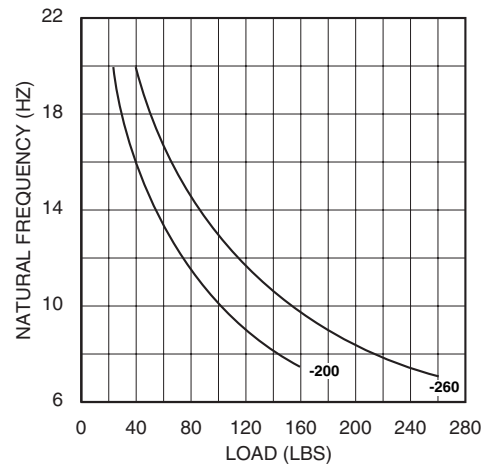
633A-200 through 633A-260 SERIES
Dimensional Drawing



633A-200 through 633A-260
Load vs Deflection



633A-200 through 633A-260
Frequency vs. Load



633A SERIES LOAD RANGES

Part #	Maximum Static Load/Isolator (lbs.)
633A-200	200
633A-260	260

NOTE: For stainless steel applications please add "SS" to part number. Example:
For Stainless Steel 633A-200 order as part number 633A-200SS



Barry Controls
40 Guest Street • Brighton, MA 02135-9105 • (617) 787-1555 • Fax (617) 787-7807

Dimensions and data are subject to change without notice.

For technical, design, or application assistance, call toll free:

1-800-BARRY MA