

# V MOUNT SERIES

## Features

- Low natural frequency (9-10 Hertz)
- Long, dependable service life
- Off-the-shelf availability
- Proven durability

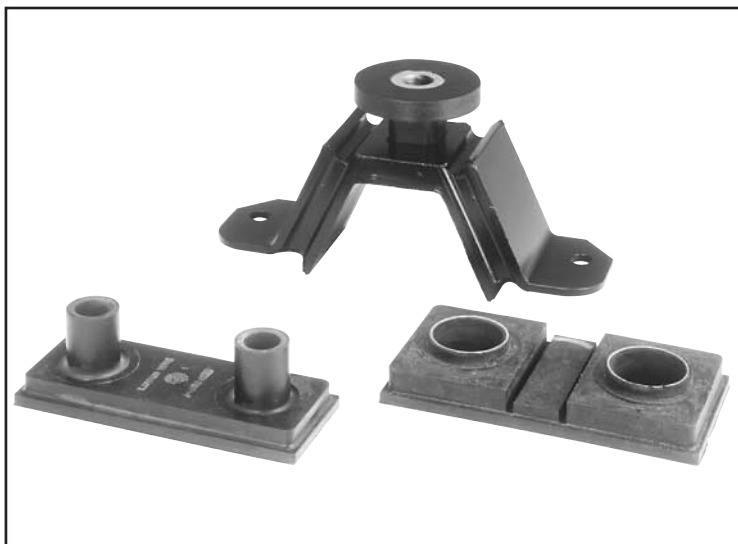
## Benefits

- Improved ride comfort
- Prevents mechanical noise transmission
- Ensures drivetrain alignment
- Eliminates minor shake
- Superior V-mount isolation

## Load Range

- 3 load ratings from 5 - 20 lbs. per mount

Engine mounts isolate vibration, absorb shock and attenuate noise due to structure-borne vibrations.



Barry V-Spring Engine mounts isolate vibration, absorb shock and attenuate noise due to structure-borne vibration. These mounts feature uniquely tuned stiffnesses to achieve optimum performance and ride comfort.

## Applications

- Class 6,7,8 truck engines
- Bus engines
- Off-highway vehicle engines
- On & off-highway vehicle cabs

NATURAL FREQUENCY	9-10 Hertz
TRANSMISSIBILITY AT RESONANCE	8:1
RESILIENT ELEMENT	Natural rubber (Neoprene Optional)
STANDARD MATERIALS	High strength steel
WEIGHT	4.3 lbs. (w/snubber)

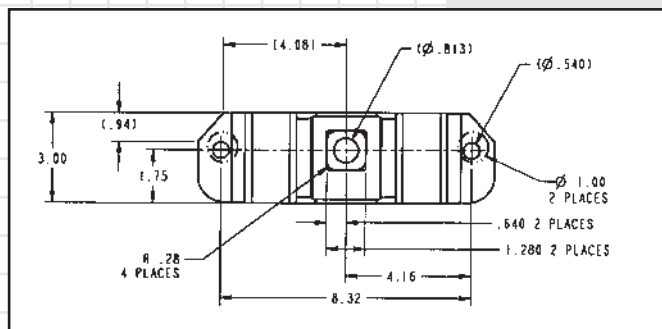
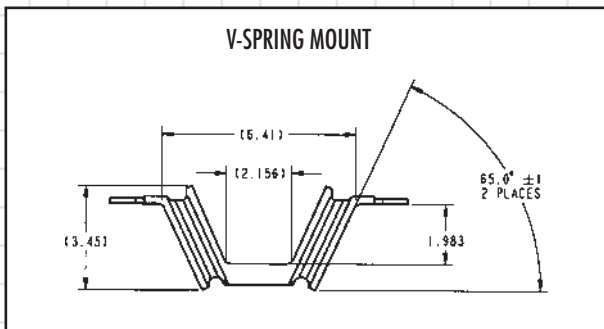
## Environmental Data

- Natural rubber elastomer has an operating temperature range of -30°C to +70°C.
- Neoprene elastomer has an operating temperature range of -30°C to +70°C.

# V Mount Series

## Dimensions & Performance Characteristics

LOAD & STIFFNESS CHARACTERISTICS										
Part #	Load Range		Vertical Deflection		Nominal Static Characteristics					
	lbs.	N	in.	mm	Vertical		Lateral		Longitudinal	
					lbs./inch	N/mm	lbs./inch	N/mm	lbs./inch	N/mm
27330-1	1,150-1,400	5,110-6,220	.10"	2.5	13,000	2,280	6,500	1,140	19,500	342
27330-2	950-1,200	4,220-5,330	.11"	2.9	9,400	1,650	4,700	825	14,000	2,457



Barry Controls  
40 Guest Street • Brighton, MA 02135-9105 • (617) 787-1555 • Fax (617) 787-7807

Dimensions and data are subject to change without notice.

For technical, design, or application assistance, call toll free:

1-800-BARRY MA